

Thioredoxin Polyclonal Antibody

Catalog No: #46892



Package Size: #46892-1 50ul #46892-2 100ul

Orders: order@signalwayantibody.com

Support: tech@signalwayantibody.com

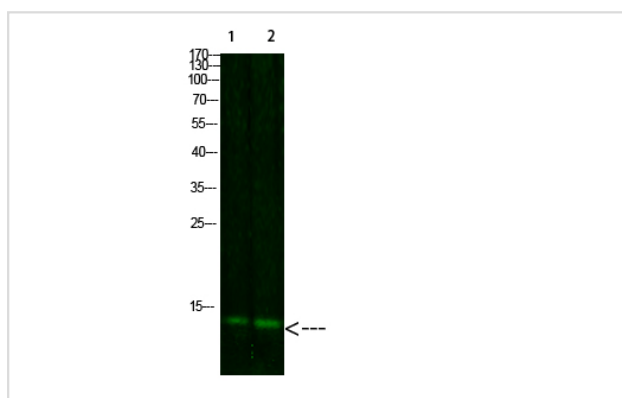
Description

Product Name	Thioredoxin Polyclonal Antibody
Host Species	Rabbit
Clonality	Polyclonal
Purification	The antibody was affinity-purified from rabbit antiserum by affinity-chromatography using epitope-specific immunogen.
Applications	WB
Species Reactivity	Hu Ms Rt
Specificity	This antibody detects endogenous levels of Thioredoxin
Immunogen Type	protein
Immunogen Description	Synthesized peptide derived from human Thioredoxin. at AA range: 52-101
Target Name	Thioredoxin
Other Names	Thioredoxin (Trx) (ATL-derived factor) (ADF) (Surface-associated sulphhydryl protein) (SASP)
Accession No.	Swiss-Prot:P10599NCBI Gene ID:7295
Calculated MW	12 kDa
Concentration	1 mg/ml
Formulation	Liquid in PBS containing 50% glycerol, 0.5% BSA and 0.02% sodium azide.
Storage	Store at -20°C

Application Details

Western blotting: 1B£B'1500-1B£B'12000

Images



Western Blot analysis of 1,mouse-liver 2,hela cells using primary antibody diluted at 1:1000(°C overnight). Secondary antibodyB£B'Goat Anti-rabbit IgG IRDye 800(diluted at 1:5000, 25B'Γ£C, 1 hour)

Note: This product is for in vitro research use only and is not intended for use in humans or animals.