

## KCTD7 Polyclonal Antibody

Catalog No: #46896

Package Size: #46896-1 50ul #46896-2 100ul

Orders: [order@signalwayantibody.com](mailto:order@signalwayantibody.com)Support: [tech@signalwayantibody.com](mailto:tech@signalwayantibody.com)

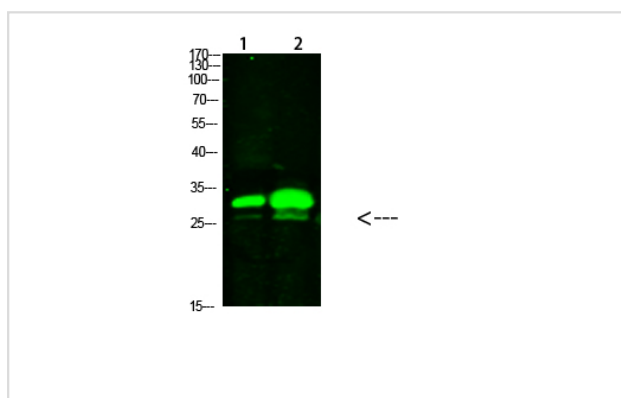
## Description

Product Name	KCTD7 Polyclonal Antibody
Host Species	Rabbit
Clonality	Polyclonal
Purification	The antibody was affinity-purified from rabbit antiserum by affinity-chromatography using epitope-specific immunogen.
Applications	WB
Species Reactivity	Hu Ms Rt
Specificity	This antibody detects endogenous levels of KCTD7
Immunogen Type	protein
Immunogen Description	Synthesized peptide derived from human KCTD7. at AA range: 181-230
Target Name	KCTD7
Other Names	BTB/POZ domain-containing protein KCTD7
Accession No.	Swiss-Prot:Q96MP8NCBI Gene ID:154881
Calculated MW	33 kDa
Concentration	1 mg/ml
Formulation	Liquid in PBS containing 50% glycerol, 0.5% BSA and 0.02% sodium azide.
Storage	Store at -20°C

## Application Details

Western blotting: 1B£B1500-1B£B12000

## Images



Western Blot analysis of 1,mouse-brain 2,mouse-spleen cells using primary antibody diluted at 1:1000(°C overnight). Secondary antibodyB£B1Goat Anti-rabbit IgG IRDye 800( diluted at 1:5000, 25B'Γ£C, 1 hour)

Note: This product is for in vitro research use only and is not intended for use in humans or animals.