

# PBEF Polyclonal Antibody

Catalog No: #46905



Package Size: #46905-1 50ul #46905-2 100ul

Orders: [order@signalwayantibody.com](mailto:order@signalwayantibody.com)

Support: [tech@signalwayantibody.com](mailto:tech@signalwayantibody.com)

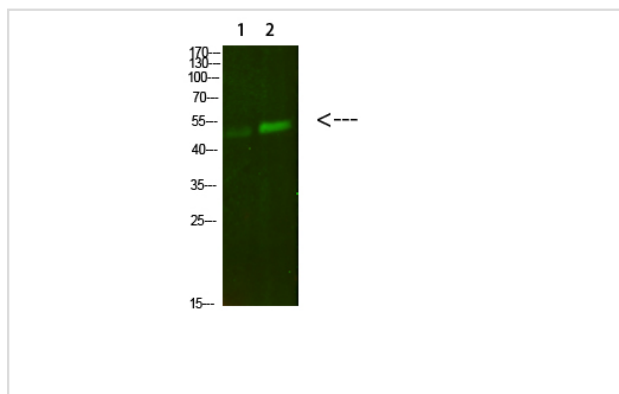
## Description

Product Name	PBEF Polyclonal Antibody
Host Species	Rabbit
Clonality	Polyclonal
Purification	The antibody was affinity-purified from rabbit antiserum by affinity-chromatography using epitope-specific immunogen.
Applications	WB
Species Reactivity	Hu Ms Rt
Specificity	PBEF Polyclonal Antibody detects endogenous levels of PBEF
Immunogen Type	protein
Immunogen Description	Synthesized peptide derived from human PBEF. at AA range: 411-460
Target Name	PBEF
Other Names	Nicotinamide phosphoribosyltransferase (NAMPRase) (Nampt) (EC 2.4.2.12) (Pre-B-cell colony-enhancing factor 1) (Pre-B cell-enhancing factor) (Visfatin)
Accession No.	Swiss-Prot:P43490NCBI Gene ID:10135
Calculated MW	54 kDa
Concentration	1 mg/ml
Formulation	Liquid in PBS containing 50% glycerol, 0.5% BSA and 0.02% sodium azide.
Storage	Store at -20°C

## Application Details

Western blotting: 1BEB1500-1BEB12000

## Images



Western Blot analysis of 1,mouse-lung 2,mouse-kidney cells using primary antibody diluted at 1:500(°C overnight). Secondary antibodyBEB1Goat Anti-rabbit IgG IRDye 800( diluted at 1:5000, 25B°C, 1 hour)

---

Note: This product is for in vitro research use only and is not intended for use in humans or animals.