

COL8A2 Polyclonal Antibody

Catalog No: #46907



Package Size: #46907-1 50ul #46907-2 100ul

Orders: order@signalwayantibody.comSupport: tech@signalwayantibody.com

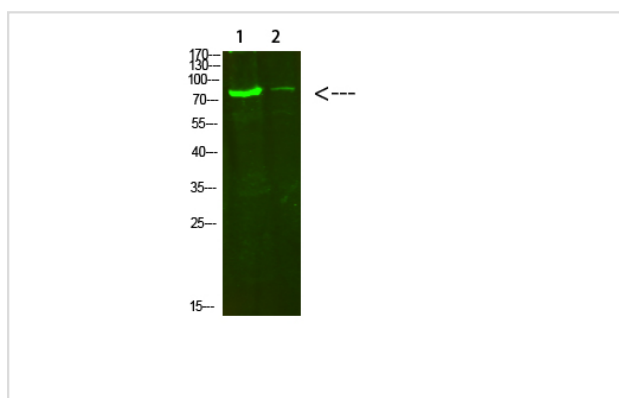
Description

Product Name	COL8A2 Polyclonal Antibody
Host Species	Rabbit
Clonality	Polyclonal
Purification	The antibody was affinity-purified from rabbit antiserum by affinity-chromatography using epitope-specific immunogen.
Applications	WB
Species Reactivity	Hu Ms Rt
Specificity	COL8A2 Polyclonal Antibody detects endogenous levels of COL8A2
Immunogen Type	protein
Immunogen Description	Synthesized peptide derived from human COL8A2. at AA range: 611-660
Target Name	COL8A2
Other Names	Collagen alpha-2(VIII) chain (Endothelial collagen)
Accession No.	Swiss-Prot:P25067NCBI Gene ID:1296
Calculated MW	80 kDa
Concentration	1 mg/ml
Formulation	Liquid in PBS containing 50% glycerol, 0.5% BSA and 0.02% sodium azide.
Storage	Store at -20°C

Application Details

Western blotting: 1B£B'1500-1B£B'12000

Images



Western Blot analysis of 1, HeLa 2, 3T3 cells using primary antibody diluted at 1:500 (°C overnight). Secondary antibody B£B'1Goat Anti-rabbit IgG IRDye 800 (diluted at 1:5000, 25B'7£C, 1 hour)

Note: This product is for in vitro research use only and is not intended for use in humans or animals.