

C3/C3b Antibody

Catalog No: #46372

Package Size: #46372-1 50ul #46372-2 100ul

Orders: order@signalwayantibody.comSupport: tech@signalwayantibody.com

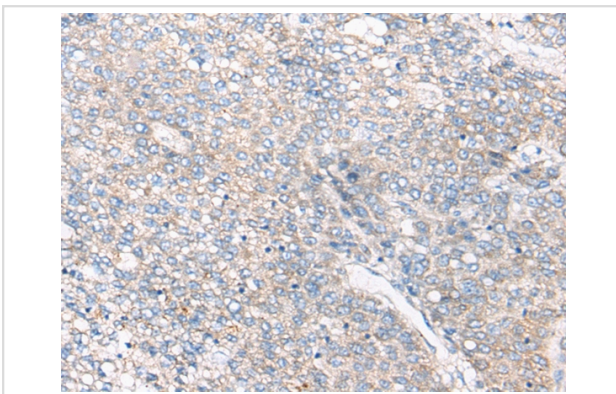
Description

Product Name	C3/C3b Antibody
Host Species	Rabbit
Clonality	Polyclonal
Purification	Antigen affinity purification
Applications	IHC,ELISA
Species Reactivity	Human, Mouse, Rat
Specificity	The antibody detects endogenous levels of total C3/C3b protein.
Immunogen Description	Synthetic peptide corresponding to internal residues of human C3,C3b
Target Name	C3/C3b
Other Names	ASP; C3a; C3b; AHUS5; ARMD9; CPAMD1; HEL-S-62p
Accession No.	Swiss-Prot:P01024 NCBI Gene ID:718NCBI Protein:NP_000055
Concentration	0.9mg/ml
Formulation	Rabbit IgG in pH7.4 PBS, 0.05% NaN ₃ , 40% Glycerol.
Storage	Store at -20°C

Application Details

Immunohistochemistry: 1: 20-100

Images



The image on the left is immunohistochemistry of paraffin-embedded Human liver cancer tissue using 46372(C3/C3b Antibody) at dilution 1/35, on the right is treated with synthetic peptide. (Original magnification: x200)

Background

Complement component C3 plays a central role in the activation of complement system. Its activation is required for both classical and alternative complement activation pathways. The encoded preproprotein is proteolytically processed to generate alpha and beta subunits that form the mature protein, which is then further processed to generate numerous peptide products. The C3a peptide, also known as the C3a anaphylatoxin, modulates inflammation and possesses antimicrobial activity. Mutations in this gene are associated with atypical hemolytic uremic syndrome and age-related macular degeneration in human patients.

Note: This product is for in vitro research use only and is not intended for use in humans or animals.