

MYH1 Antibody

Catalog No: #31804

Orders: order@signalwayantibody.comSupport: tech@signalwayantibody.com

Description

Product Name	MYH1 Antibody
Host Species	Rabbit
Clonality	Polyclonal
Purification	Affinity purification
Applications	WB IHC IF
Species Reactivity	Hu Ms Rt
Immunogen Type	Recombinant Protein
Immunogen Description	Recombinant fusion protein containing a sequence corresponding to amino acids 1-100 of human MYH1 (NP_005954.3).
Target Name	MYH1
Other Names	MYH1; HEL71; MYHSA1; MYHa; MyHC-2X/D; MyHC-2x; myosin-1
Accession No.	Swiss-Prot#: P12882 NCBI Gene ID: 4619 NCBI mRNA#: NM_005963.3 Protein# oO y NP_005954.3
Calculated MW	223kDa
Concentration	1mg/ml
Formulation	PBS with 0.02% sodium azide, 50% glycerol, pH7.3.
Storage	Store at -20°C for 1 year

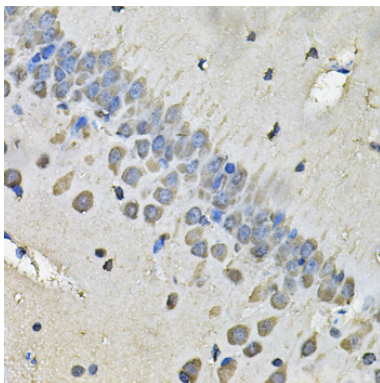
Application Details

WB dilution: 1:500 - 1:2000

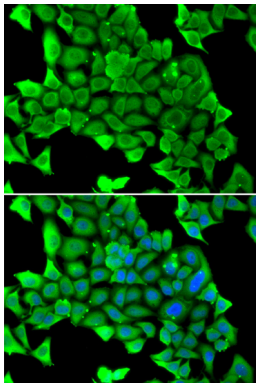
IHC dilution: 1:50 - 1:200

IF dilution: IF 1:50 - 1:200

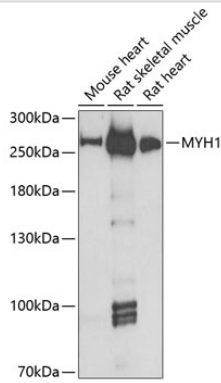
Images



Immunohistochemistry of paraffin-embedded rat brain using MYH1 at dilution of 1:100 (40x lens).



Immunofluorescence analysis of U2OS cells using MYH1 .
Blue: DAPI for nuclear staining.



Immunofluorescence analysis of U2OS cells using MYH1 .
Blue: DAPI for nuclear staining.

Background

Myosin is a major contractile protein which converts chemical energy into mechanical energy through the hydrolysis of ATP. Myosin is a hexameric protein composed of a pair of myosin heavy chains (MYH) and two pairs of nonidentical light chains. Myosin heavy chains are encoded by a multigene family. In mammals at least 10 different myosin heavy chain (MYH) isoforms have been described from striated, smooth, and nonmuscle cells. These isoforms show expression that is spatially and temporally regulated during development.

Note: This product is for in vitro research use only and is not intended for use in humans or animals.