

# ZNF300 antibody

Catalog No: #31824



Package Size: #31824-1 50ul #31824-2 100ul

Orders: [order@signalwayantibody.com](mailto:order@signalwayantibody.com)

Support: [tech@signalwayantibody.com](mailto:tech@signalwayantibody.com)

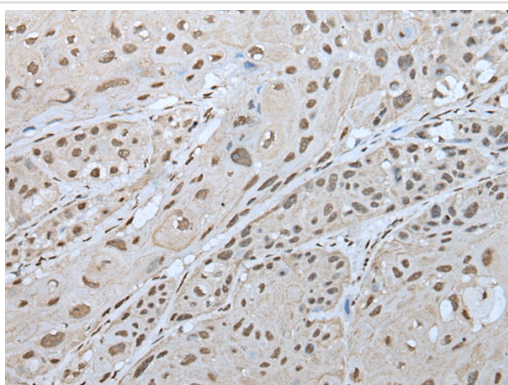
## Description

Product Name	ZNF300 antibody
Host Species	Rabbit
Clonality	Polyclonal
Purification	Antigen affinity purification
Applications	IHC
Species Reactivity	Hu
Immunogen Description	Fusion protein of human ZNF300
Target Name	ZNF300
Accession No.	NCBI Protein#:BC117248
Concentration	0.4mg/ml
Formulation	pH7.4 PBS, 0.05% NaN3, 40% Glycerol
Storage	Store at -20°C/1 year

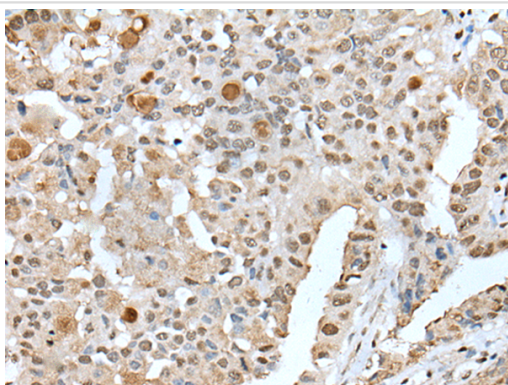
## Application Details

IHC dilution:1:25-1:100

## Images



The image is immunohistochemistry of paraffin-embedded Human esophagus cancer tissue using (ZNF300 Antibody) at dilution 1/30.



The image is immunohistochemistry of paraffin-embedded Human liver cancer tissue using (ZNF300 Antibody) at dilution 1/30.

## Background

---

The protein encoded by this gene is a C2H2-type zinc finger DNA binding protein and likely transcriptional regulator. The function of this protein is not yet known. Three transcript variants encoding different isoforms have been found for this gene.

---

Note: This product is for in vitro research use only and is not intended for use in humans or animals.