

ERAL1 antibody

Catalog No: #31853

Package Size: #31853-1 50ul #31853-2 100ul

Orders: order@signalwayantibody.comSupport: tech@signalwayantibody.com

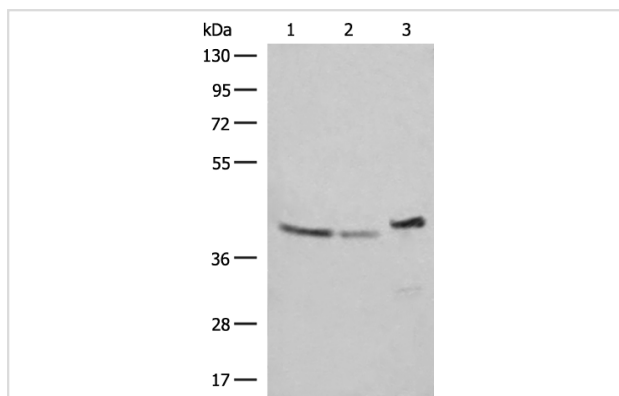
Description

Product Name	ERAL1 antibody
Host Species	Rabbit
Clonality	Polyclonal
Purification	Antigen affinity purification
Applications	WB
Species Reactivity	Hu
Immunogen Description	Fusion protein of human ERAL1
Target Name	ERAL1
Other Names	ERA; CEGA; ERA-W; H-ERA; ERAL1A; ERAL1B; HERA-A; HERA-B; PRLTS6
Accession No.	NCBI Protein#:BC019094
Calculated MW	48 kDa
Concentration	1.2mg/ml
Formulation	pH7.4 PBS, 0.05% NaN ₃ , 40% Glycerol
Storage	Store at -20°C/1 year

Application Details

WB dilution:1:500-1:2000

Images



Gel: 8%SDS-PAGE, Lysate: 40 µg, Lane 1-3: SKOV3, Hela and HepG2 cell lysates, Primary antibody:ERAL1 Antibody at dilution 1/500, Secondary antibody: Goat anti rabbit IgG at 1/8000 dilution, Exposure time: 5 seconds

Background

The protein encoded by this gene is a GTPase that localizes to the mitochondrion. The encoded protein binds to the 3' terminal stem loop of 12S mitochondrial rRNA and is required for proper assembly of the 28S small mitochondrial ribosomal subunit. Deletion of this gene has been shown to cause mitochondrial dysfunction, growth retardation, and apoptosis. Several transcript variants encoding different isoforms have been found for this gene.

Note: This product is for in vitro research use only and is not intended for use in humans or animals.