

DHX38 antibody

Catalog No: #31924

Package Size: #31924-1 50ul #31924-2 100ul

Orders: order@signalwayantibody.comSupport: tech@signalwayantibody.com

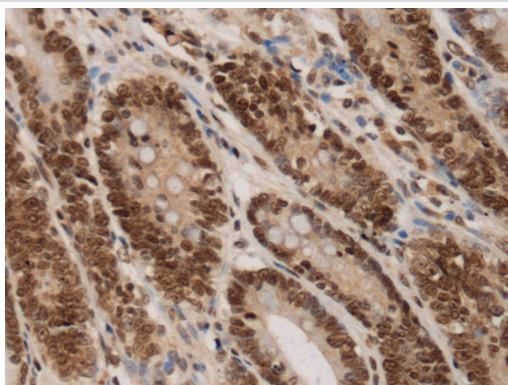
Description

Product Name	DHX38 antibody
Host Species	Rabbit
Clonality	Polyclonal
Purification	Antigen affinity purification
Applications	IHC
Species Reactivity	Hu
Immunogen Description	Fusion protein of human DHX38
Target Name	DHX38
Other Names	RP84; DDX38; PRP16; PRPF16
Accession No.	NCBI Protein#:BC004235
Concentration	0.8mg/ml
Formulation	pH7.4 PBS, 0.05% NaN3, 40% Glycerol
Storage	Store at -20°C/1 year

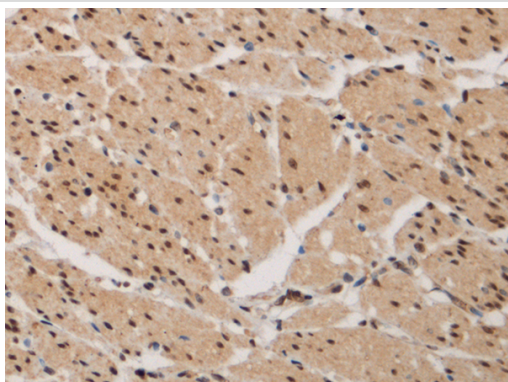
Application Details

IHC dilution:1:100-1:300

Images



The image is immunohistochemistry of paraffin-embedded Human gastric cancer tissue using (ntibody) at dilution 1/90.



The image is immunohistochemistry of paraffin-embedded Human esophagus cancer tissue using (ntibody) at dilution 1/90.

Background

DEAD box proteins, characterized by the conserved motif Asp-Glu-Ala-Asp (DEAD), are putative RNA helicases. They are implicated in a number of cellular processes involving alteration of RNA secondary structure such as translation initiation, nuclear and mitochondrial splicing, and ribosome and spliceosome assembly. Based on their distribution patterns, some members of this family are believed to be involved in embryogenesis, spermatogenesis, and cellular growth and division. The protein encoded by this gene is a member of the DEAD/H box family of splicing factors. This protein resembles yeast Prp16 more closely than other DEAD/H family members. It is an ATPase and essential for the catalytic step II in pre-mRNA splicing process. [provided by RefSeq, Jul 2008]

Note: This product is for in vitro research use only and is not intended for use in humans or animals.