

ERMAP antibody

Catalog No: #31940



Package Size: #31940-1 50ul #31940-2 100ul

Orders: order@signalwayantibody.com

Support: tech@signalwayantibody.com

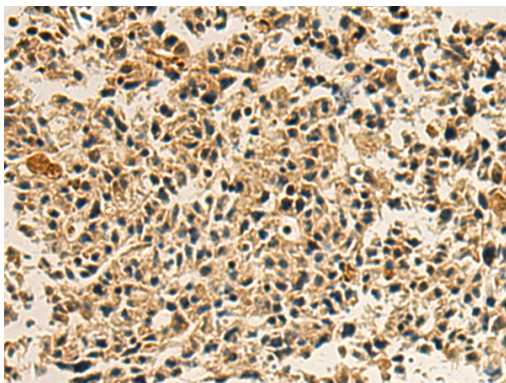
Description

Product Name	ERMAP antibody
Host Species	Rabbit
Clonality	Polyclonal
Purification	Antigen affinity purification
Applications	IHC
Species Reactivity	Hu, Ms
Immunogen Description	Fusion protein of human ERMAP
Target Name	ERMAP
Other Names	RD; SC; BTN5; PRO2801
Accession No.	NCBI Protein#:BC099703
Concentration	0.8mg/ml
Formulation	pH7.4 PBS, 0.05% NaN3, 40% Glycerol
Storage	Store at -20°C/1 year

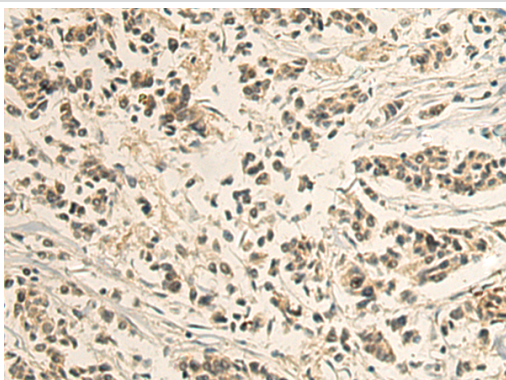
Application Details

IHC dilution:1:100-1:200

Images



The image is immunohistochemistry of paraffin-embedded Human ovarian cancer tissue using (ERMAP Antibody) at dilution 1/90.



The image is immunohistochemistry of paraffin-embedded Human breast cancer tissue using (ERMAP Antibody) at dilution 1/90.

Background

The protein encoded by this gene is a cell surface transmembrane protein that may act as an erythroid cell receptor, possibly as a mediator of cell adhesion. Polymorphisms in this gene are responsible for the Scianna/Radin blood group system. Two transcript variants encoding the same protein have been found for this gene. [provided by RefSeq, Jul 2008]

Note: This product is for in vitro research use only and is not intended for use in humans or animals.