

ENKD1 antibody

Catalog No: #40407



Package Size: #40407-1 50ul #40407-2 100ul

Orders: order@signalwayantibody.comSupport: tech@signalwayantibody.com

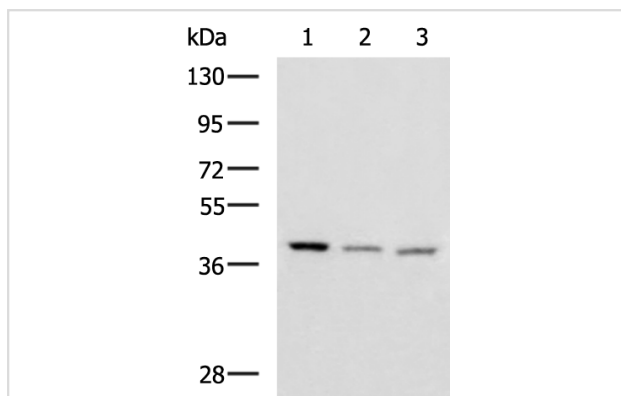
Description

| | |
|-----------------------|--|
| Product Name | ENKD1 antibody |
| Host Species | Rabbit |
| Clonality | Polyclonal |
| Purification | Antigen affinity purification |
| Applications | WB, IHC |
| Species Reactivity | Hu, Ms |
| Immunogen Description | Fusion protein of human ENKD1 |
| Target Name | ENKD1 |
| Other Names | C16orf48; DAKV6410 |
| Accession No. | NCBI Protein#:BC008284 |
| Calculated MW | 39 kDa |
| Concentration | 1.4mg/ml |
| Formulation | pH7.4 PBS, 0.05% NaN ₃ , 40% Glycerol |
| Storage | Store at -20°C/1 year |

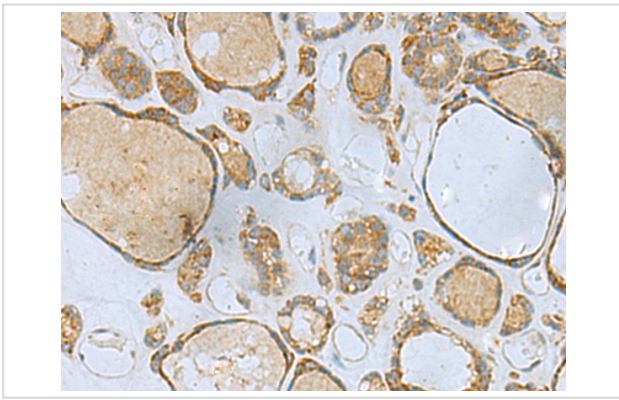
Application Details

WB dilution:1:500-1:2000IHC dilution:1:50-1:200

Images



Gel: 8%SDS-PAGE, Lysate: 40 µg, Lane 1-3: Human cerebrum tissue, Human cerebella tissue, Mouse brain tissue lysates, Primary antibody:ENKD1 Antibody at dilution 1/1150, Secondary antibody: Goat anti rabbit IgG at 1/5000 dilution, Exposure time: 3 minutes



The image is immunohistochemistry of paraffin-embedded Human thyroid cancer tissue using (ENKbody) at dilution 1/80.

Background

The exact function of ENKD1 remains unknown.

Note: This product is for in vitro research use only and is not intended for use in humans or animals.