

EFHC2 antibody

Catalog No: #40411

Package Size: #40411-1 50ul #40411-2 100ul

Orders: order@signalwayantibody.comSupport: tech@signalwayantibody.com

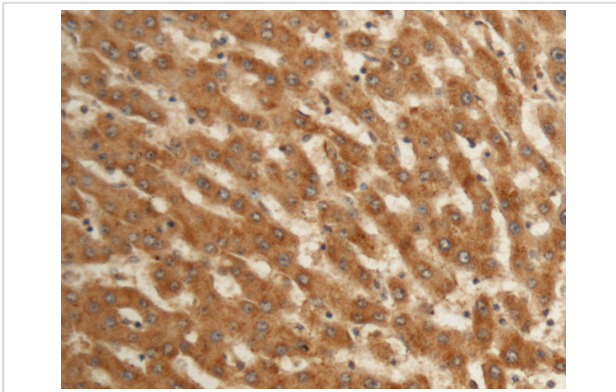
Description

Product Name	EFHC2 antibody
Host Species	Rabbit
Clonality	Polyclonal
Purification	Antigen affinity purification
Applications	IHC
Species Reactivity	Hu
Immunogen Description	Fusion protein of human EFHC2
Target Name	EFHC2
Other Names	MRX74; dJ1158H2.1
Accession No.	NCBI Protein#:BC031039
Concentration	1.1mg/ml
Formulation	pH7.4 PBS, 0.05% NaN ₃ , 40% Glycerol
Storage	Store at -20°C/1 year

Application Details

IHC dilution:1:200-1:300

Images



The image is immunohistochemistry of paraffin-embedded Human liver cancer tissue using (EFHC2 Antibody) at dilution 1/150.

Background

This gene encodes a protein which contains three DM10 domains and three calcium-binding EF-hand motifs. A related protein is encoded by a gene on chromosome 6. It has been suggested that both proteins are involved in the development of epilepsy (PMID: 15258581, 16112844) and that this gene may be associated with fear recognition in individuals with Turner syndrome. [provided by RefSeq, Aug 2011]

Note: This product is for in vitro research use only and is not intended for use in humans or animals.