

EXOG antibody

Catalog No: #43483

Package Size: #43483-1 50ul #43483-2 100ul

Orders: order@signalwayantibody.com

Support: tech@signalwayantibody.com

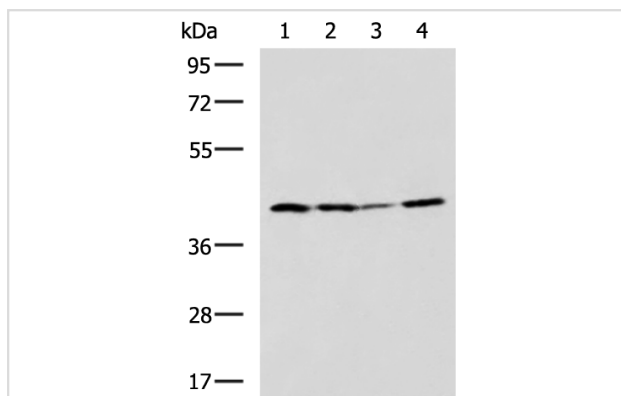
Description

Product Name	EXOG antibody
Host Species	Rabbit
Clonality	Polyclonal
Purification	Antigen affinity purification
Applications	WB, IHC
Species Reactivity	Hu, Ms
Immunogen Description	Fusion protein of human EXOG
Target Name	EXOG
Other Names	ENGL; ENGLA; ENGLB; ENGL-a; ENGL-b; ENDOGL1; ENDOGL2
Accession No.	NCBI Protein#:BC104212
Calculated MW	41 kDa
Concentration	1.1mg/ml
Formulation	pH7.4 PBS, 0.05% NaN ₃ , 40% Glycerol
Storage	Store at -20°C/1 year

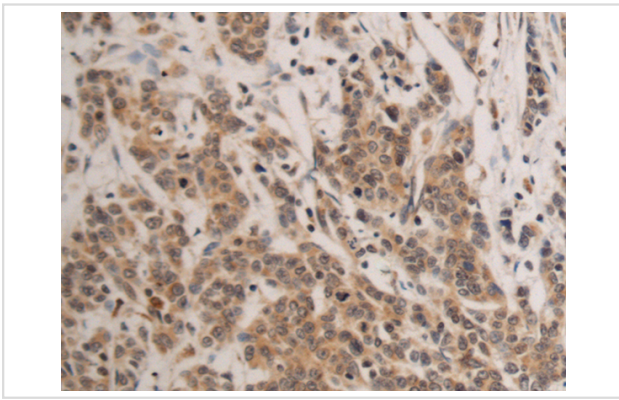
Application Details

WB dilution:1:500-1:2000IHC dilution:1:50-1:300

Images



Gel: 8%SDS-PAGE, Lysate: 40 µg, Lane 1-4: K562, LOVO, HT-29, HUVEC cell lysates, Primary antibody:EXOG Antibody at dilution 1/800, Secondary antibody: Goat anti rabbit IgG at 1/5000 dilution, Exposure time: 1 minute



The image is immunohistochemistry of paraffin-embedded Human colorectal cancer tissue using (EXOG Antibody) at dilution 1/135.

Background

This gene encodes an endo/exonuclease with 5'-3' exonuclease activity. The encoded enzyme catalyzes the hydrolysis of ester linkages at the 5' end of a nucleic acid chain. This enzyme is localized to the mitochondria and may play a role in programmed cell death. Alternatively spliced transcript variants have been described. A pseudogene exists on chromosome 18. [provided by RefSeq, Feb 2009]

Note: This product is for in vitro research use only and is not intended for use in humans or animals.