

DCAF12 antibody

Catalog No: #43494



Package Size: #43494-1 50ul #43494-2 100ul

Orders: order@signalwayantibody.com

Support: tech@signalwayantibody.com

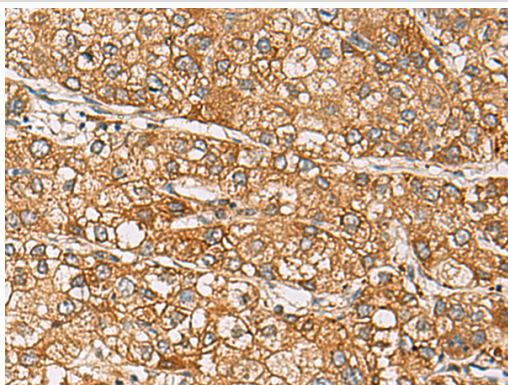
Description

Product Name	DCAF12 antibody
Host Species	Rabbit
Clonality	Polyclonal
Purification	Antigen affinity purification
Applications	IHC
Species Reactivity	Hu, Ms
Immunogen Description	Synthetic peptide of human DCAF12
Target Name	DCAF12
Other Names	CT102; TCC52; WDR40A; KIAA1892
Accession No.	NCBI Protein#:NP_056212
Concentration	1.9mg/ml
Formulation	pH7.4 PBS, 0.05% NaN ₃ , 40% Glycerol
Storage	Store at -20°C/1 year

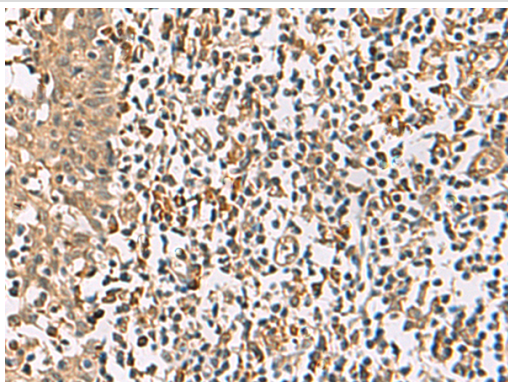
Application Details

IHC dilution:1:50-1:200

Images



The image is immunohistochemistry of paraffin-embedded Human liver cancer tissue using (Antibody) at dilution 1/65.



The image is immunohistochemistry of paraffin-embedded Human tonsil tissue using (Antibody) at dilution 1/65.

Background

This gene encodes a WD repeat-containing protein that interacts with the COP9 signalosome, a macromolecular complex that interacts with cullin-RING E3 ligases and regulates their activity by hydrolyzing cullin-Nedd8 conjugates.

Note: This product is for in vitro research use only and is not intended for use in humans or animals.