

## TAPBP Polyclonal Antibody

Catalog No: #29114



Package Size: #29114-1 50ul #29114-2 100ul

Orders: [order@signalwayantibody.com](mailto:order@signalwayantibody.com)Support: [tech@signalwayantibody.com](mailto:tech@signalwayantibody.com)

## Description

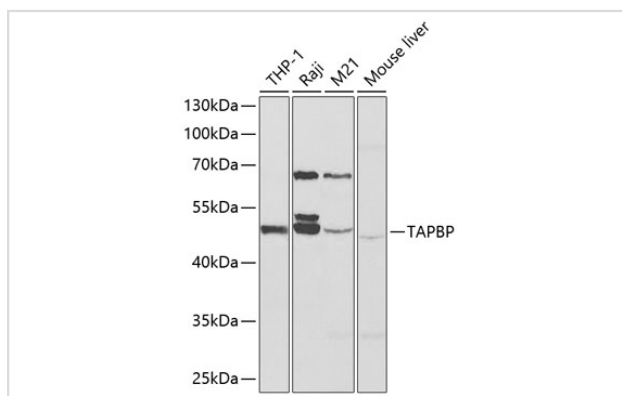
Product Name	TAPBP Polyclonal Antibody
Host Species	Rabbit
Clonality	Polyclonal
Isotype	IgG
Purification	Affinity purification
Applications	WB,IF
Species Reactivity	Human,Mouse,Rat
Immunogen Description	Recombinant fusion protein of human TAPBP (NP_757345.2).
Other Names	TAPBP;NGS17;TAPA;TPN;TPSN;tapasin
Accession No.	Uniprot:O15533GeneID:6892
Calculated MW	38kDa/43kDa/47kDa/53kDa
SDS-PAGE MW	48kDa
Concentration	1.0mg/ml
Formulation	PBS with 0.02% sodium azide,50% glycerol,pH7.3.
Storage	Store at -20°C. Avoid freeze / thaw cycles.

## Application Details

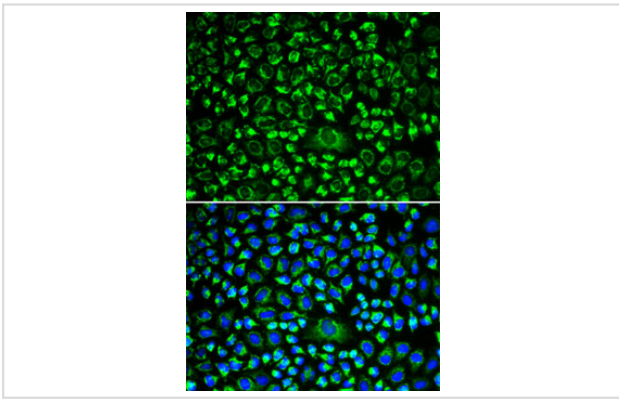
WB □ 1:500 - 1:2000

IF □ 1:50 - 1:200

## Images



Western blot analysis of extracts of various cell lines, using TAPBP antibody.



Immunofluorescence analysis of HeLa cells using TAPBP antibody.

## Background

This gene encodes a transmembrane glycoprotein which mediates interaction between newly assembled major histocompatibility complex (MHC) class I molecules and the transporter associated with antigen processing (TAP), which is required for the transport of antigenic peptides across the endoplasmic reticulum membrane. This interaction is essential for optimal peptide loading on the MHC class I molecule. Up to four complexes of MHC class I and this protein may be bound to a single TAP molecule. This protein contains a C-terminal double-lysine motif (KKKAE) known to maintain membrane proteins in the endoplasmic reticulum. This gene lies within the major histocompatibility complex on chromosome 6. Alternative splicing results in three transcript variants encoding different isoforms.

Note: This product is for in vitro research use only and is not intended for use in humans or animals.