

ZNF581 Polyclonal Antibody

Catalog No: #29136



Package Size: #29136-1 50ul #29136-2 100ul

Orders: order@signalwayantibody.com

Support: tech@signalwayantibody.com

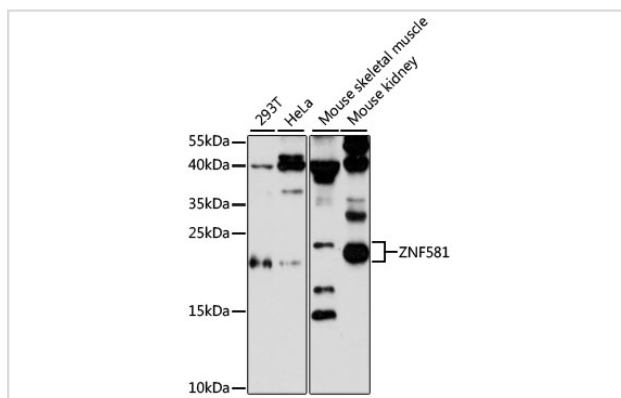
Description

Product Name	ZNF581 Polyclonal Antibody
Host Species	Rabbit
Clonality	Polyclonal
Isotype	IgG
Purification	Affinity purification
Applications	WB,IHC,IF
Species Reactivity	Human,Mouse,Rat
Immunogen Description	Recombinant fusion protein of human ZNF581 (NP_057619.1).
Other Names	ZNF581;HSPC189
Accession No.	GeneID:51545Swiss Prot:Q9P0T4
Calculated MW	22kDa
SDS-PAGE MW	22-24kDa
Formulation	Supplied at 1.0mg/mL in phosphate buffered saline (without Mg ²⁺ and Ca ²⁺), pH 7.4, 150mM NaCl, 0.02% sodium azide and 27% glycerol.
Storage	Store at -20°C. Avoid freeze / thaw cycles. Buffer: PBS with 0.02% sodium azide, 50% glycerol, pH 7.230.

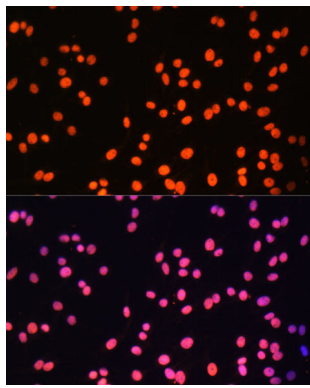
Application Details

WB 1:1000 - 1:2000 IHC 1:50 - 1:200 IF 1:50 - 1:200

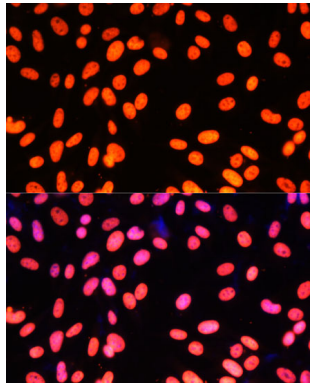
Images



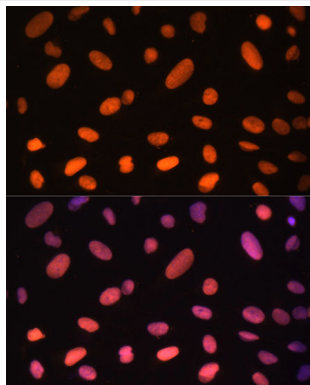
Western blot analysis of extracts of various cell lines, using ZNF581 antibody at 1:3000 dilution.



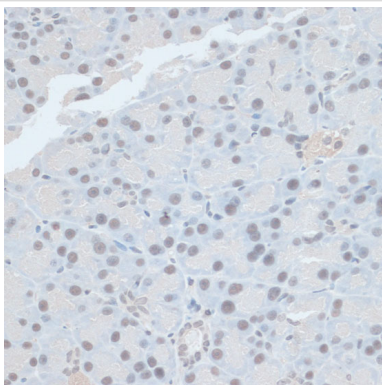
Immunofluorescence analysis of C6 cells using ZNF581 Polyclonal Antibody at dilution of 1:100 . Blue: DAPI for nuclear staining.



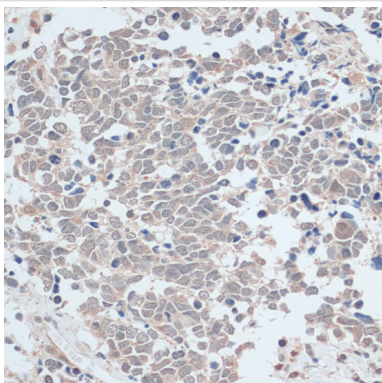
Immunofluorescence analysis of NIH-3T3 cells using ZNF581 Polyclonal Antibody at dilution of 1:100 . Blue: DAPI for nuclear staining.



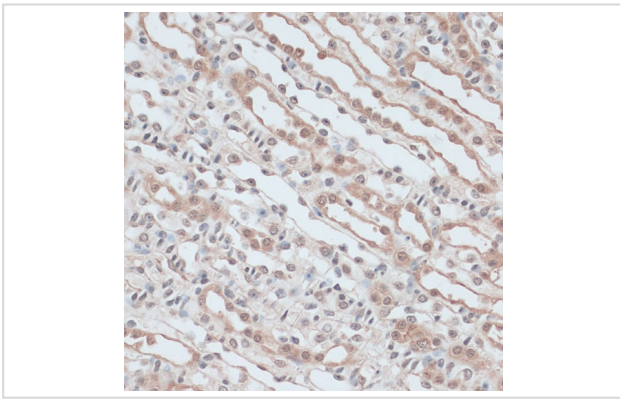
Immunofluorescence analysis of U-2 OS cells using ZNF581 Polyclonal Antibody at dilution of 1:100 . Blue: DAPI for nuclear staining.



Immunohistochemistry of paraffin-embedded rat pancreas using ZNF581 antibody at dilution of 1:100 .



Immunohistochemistry of paraffin-embedded human lung cancer using ZNF581 antibody at dilution of 1:100 .



Immunohistochemistry of paraffin-embedded mouse kidney using ZNF581 antibody at dilution of 1:100 .

Background

-

Note: This product is for in vitro research use only and is not intended for use in humans or animals.