

## LRP1B Antibody

Catalog No: #46600

Package Size: #46600-1 50ul #46600-2 100ul

Orders: [order@signalwayantibody.com](mailto:order@signalwayantibody.com)Support: [tech@signalwayantibody.com](mailto:tech@signalwayantibody.com)

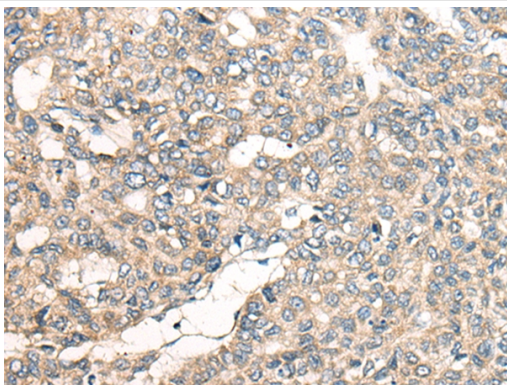
## Description

Product Name	LRP1B Antibody
Host Species	Rabbit
Clonality	Polyclonal
Purification	Antigen affinity purification
Applications	IHC
Species Reactivity	Hu Ms
Specificity	The antibody detects endogenous levels of total LRP1B protein.
Immunogen Type	peptide
Immunogen Description	Synthetic peptide corresponding to residues near the C terminal of human LRP1B
Target Name	LRP1B
Other Names	LRPDIT; LRP-DIT
Accession No.	Swiss-Prot:Q9NZR2 NCBI Gene ID:53353NCBI Protein:NP_061027
Concentration	1.2mg/ml
Formulation	Rabbit IgG in pH7.4 PBS, 0.05% NaN <sub>3</sub> , 40% Glycerol.
Storage	Store at -20°C

## Application Details

Immunohistochemistry: 1: 40-200

## Images



The image on the left is immunohistochemistry of paraffin-embedded Human liver cancer tissue using 46600(LRP1B Antibody) at dilution 1/50, on the right is treated with synthetic peptide. (Original magnification: x200)

## Background

LRP1B belongs to the low density lipoprotein (LDL) receptor gene family. These receptors play a wide variety of roles in normal cell function and development due to their interactions with multiple ligands (Liu et al., 2001 [PubMed 11384978]).

---

Note: This product is for in vitro research use only and is not intended for use in humans or animals.