

VGLL3 Antibody

Catalog No: #46705



Package Size: #46705-1 50ul #46705-2 100ul

Orders: order@signalwayantibody.comSupport: tech@signalwayantibody.com

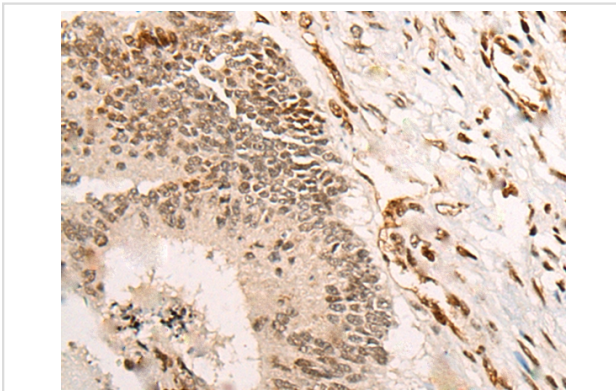
Description

Product Name	VGLL3 Antibody
Host Species	Rabbit
Clonality	Polyclonal
Purification	Antigen affinity purification
Applications	IHC
Species Reactivity	Hu
Specificity	The antibody detects endogenous levels of total VGLL3 protein.
Immunogen Type	peptide
Immunogen Description	Synthetic peptide corresponding to residues near the C terminal of human VGLL3
Target Name	VGLL3
Other Names	VGL3; VGL-3
Accession No.	Swiss-Prot:A8MV65 NCBI Gene ID:389136NCBI Protein:NP_057290
Concentration	0.8mg/ml
Formulation	Rabbit IgG in pH7.4 PBS, 0.05% NaN ₃ , 40% Glycerol.
Storage	Store at -20°C

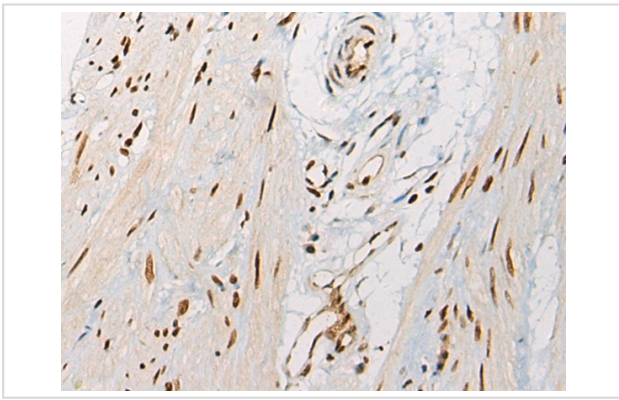
Application Details

Immunohistochemistry: 1: 20-100

Images



The image on the left is immunohistochemistry of paraffin-embedded Human colorectal cancer tissue using 46705(VGLL3 Antibody) at dilution 1/30, on the right is treated with synthetic peptide. (Original magnification: x200)



The image on the left is immunohistochemistry of paraffin-embedded Human gastric cancer tissue using 46705(VGLL3 Antibody) at dilution 1/30, on the right is treated with synthetic peptide. (Original magnification: x200)

Background

May act as a specific coactivator for the mammalian TEFs.

Note: This product is for in vitro research use only and is not intended for use in humans or animals.