

YEATS2 Antibody

Catalog No: #46713

Package Size: #46713-1 50ul #46713-2 100ul

Orders: order@signalwayantibody.comSupport: tech@signalwayantibody.com

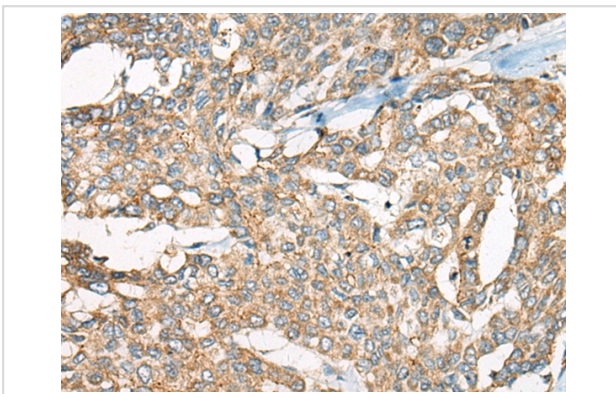
Description

Product Name	YEATS2 Antibody
Host Species	Rabbit
Clonality	Polyclonal
Purification	Antigen affinity purification
Applications	IHC
Species Reactivity	Hu
Specificity	The antibody detects endogenous levels of total YEATS2 protein.
Immunogen Type	peptide
Immunogen Description	Synthetic peptide corresponding to internal residues of human YEATS2
Target Name	YEATS2
Accession No.	Swiss-Prot:Q9ULM3 NCBI Gene ID:55689NCBI Protein:NP_060493
Concentration	1.3mg/ml
Formulation	Rabbit IgG in pH7.4 PBS, 0.05% NaN ₃ , 40% Glycerol.
Storage	Store at -20°C

Application Details

Immunohistochemistry: 1: 40-200

Images



The image on the left is immunohistochemistry of paraffin-embedded Human liver cancer tissue using 46713(YEATS2 Antibody) at dilution 1/55, on the right is treated with synthetic peptide. (Original magnification: x200)

Background

YEATS2 is a scaffolding subunit of the ADA2A (TADA2A; MIM 602276)-containing (ATAC) histone acetyltransferase complex (Wang et al., 2008 [PubMed 18838386]).

Note: This product is for in vitro research use only and is not intended for use in humans or animals.