

YTHDF1 Antibody

Catalog No: #46714

Package Size: #46714-1 50ul #46714-2 100ul

Orders: order@signalwayantibody.com

Support: tech@signalwayantibody.com

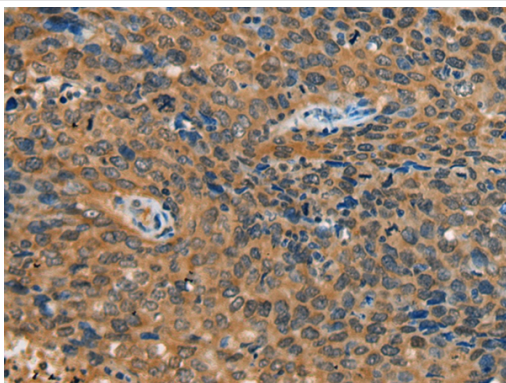
Description

Product Name	YTHDF1 Antibody
Host Species	Rabbit
Clonality	Polyclonal
Purification	Antigen affinity purification
Applications	IHC
Species Reactivity	Hu
Specificity	The antibody detects endogenous levels of total YTHDF1 protein.
Immunogen Type	peptide
Immunogen Description	Synthetic peptide corresponding to residues near the N terminal of human YTHDF1
Target Name	YTHDF1
Other Names	C20orf21
Accession No.	Swiss-Prot:Q9BYJ9 NCBI Gene ID:54915NCBI Protein:NP_060268
Concentration	1.4mg/ml
Formulation	Rabbit IgG in pH7.4 PBS, 0.05% NaN ₃ , 40% Glycerol.
Storage	Store at -20°C

Application Details

Immunohistochemistry: 1: 40-200

Images



The image on the left is immunohistochemistry of paraffin-embedded Human cervical cancer tissue using 46714(YTHDF1 Antibody) at dilution 1/55, on the right is treated with synthetic peptide. (Original magnification: x200)

Background

YTHDF1, also designated Dermatomyositis associated with cancer putative autoantigen 1 (DACA-1), is a 559 amino acid protein that contains one YTH domain, which is a potential RNA binding domain. Specifically recognizes and binds N⁶-methyladenosine (m⁶A)-containing mRNAs, and promotes mRNA translation efficiency (PubMed:24284625, PubMed:26046440, PubMed:26318451). M⁶A is a modification present at internal sites of mRNAs and some non-coding RNAs and plays a role in the efficiency of mRNA splicing, processing and stability (PubMed:24284625). Acts as a

regulator of mRNA translation efficiency: promotes ribosome loading to m6A-containing mRNAs and interacts with translation initiation factors eIF3 (EIF3A or EIF3B) to facilitate translation initiation (PubMed:26046440).

Note: This product is for in vitro research use only and is not intended for use in humans or animals.