

ZNF468 Antibody

Catalog No: #46721

Package Size: #46721-1 50ul #46721-2 100ul

Orders: order@signalwayantibody.comSupport: tech@signalwayantibody.com

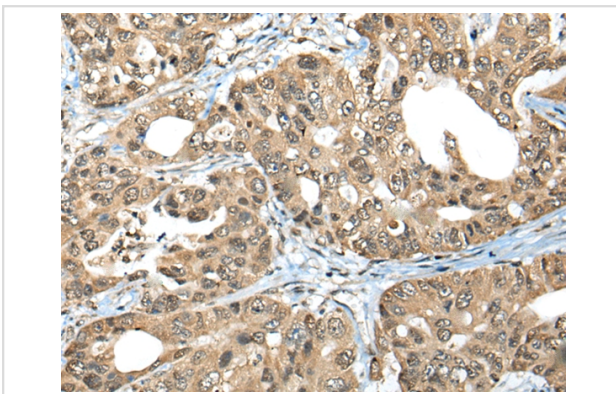
Description

Product Name	ZNF468 Antibody
Host Species	Rabbit
Clonality	Polyclonal
Purification	Antigen affinity purification
Applications	IHC
Species Reactivity	Hu
Specificity	The antibody detects endogenous levels of total ZNF468 protein.
Immunogen Type	peptide
Immunogen Description	Full length fusion protein of human ZNF468
Target Name	ZNF468
Accession No.	Swiss-Prot:Q5VIY5NCBI Gene ID:90333NCBI Protein:BC063143
Concentration	0.8mg/ml
Formulation	Rabbit IgG in pH7.4 PBS, 0.05% NaN ₃ , 40% Glycerol.
Storage	Store at -20°C

Application Details

Immunohistochemistry: 1: 30-150

Images



The image on the left is immunohistochemistry of paraffin-embedded Human gastric cancer tissue using 46721 (ZNF468 Antibody) at dilution 1/35, on the right is treated with fusion protein. (Original magnification: x200)

Background

May be involved in transcriptional regulation.

Note: This product is for in vitro research use only and is not intended for use in humans or animals.