

## Caspase-13 Antibody

Catalog No: #24097

Orders: [order@signalwayantibody.com](mailto:order@signalwayantibody.com)Support: [tech@signalwayantibody.com](mailto:tech@signalwayantibody.com)

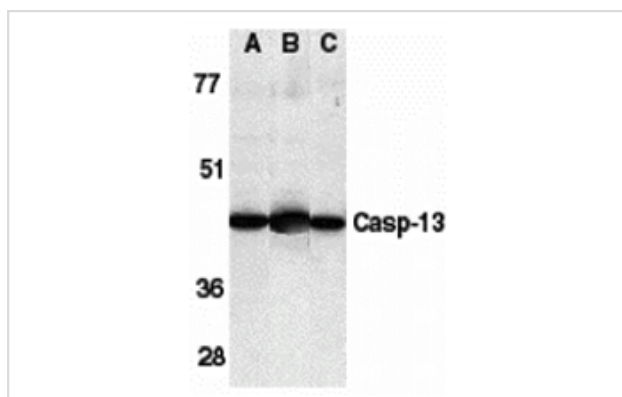
## Description

Product Name	Caspase-13 Antibody
Host Species	Rabbit
Clonality	Polyclonal
Purification	Ion exchange chromatography purified
Applications	ELISA WB IHC
Species Reactivity	Hu Ms Rt
Immunogen Type	Peptide
Immunogen Description	Raised against a peptide corresponding to amino acids 91 to 105 of human caspase-13.
Target Name	Caspase-13
Other Names	Casp-13, ERICE
Accession No.	O75601
Concentration	1mg/ml
Formulation	Supplied in PBS containing 0.02% sodium azide.
Storage	Can be stored at -20°C, stable for one year. As with all antibodies care should be taken to avoid repeated freeze thaw cycles. Antibodies should not be exposed to prolonged high temperatures.

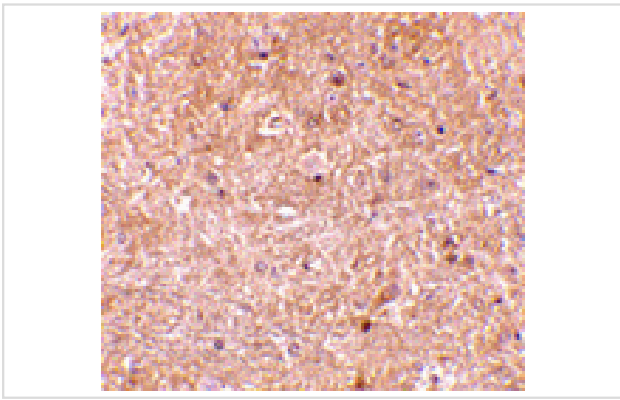
## Application Details

Predicted MW: 43 kd

## Images



Western blot analysis of caspase-13 in human HL60 cell lysate (A), mouse brain (B) and rat brain (C) tissue lysates with caspase-13 antibody at 1 ug/mL.



Immunohistochemistry of caspase-13 in mouse brain tissue with caspase-13 antibody at 10 ug/mL.

## Background

Apoptosis is related to many diseases and induced by a family of cell death receptors and their ligands. Cell death is finally caused by members of the caspase family of proteases and caspase activated DNases. A novel member in the caspase family was recently identified and designated ERICE (for Evolutionarily Related Interleukin-1 beta Converting Enzyme) and caspase-13. Caspase-13 belongs to the ICE subfamily of caspases. Overexpression of caspase-13 induces apoptosis. Caspase-13 was activated by caspase-8, which is a key enzyme in death receptor induced apoptosis. Caspase-13 is expressed in a variety of human tissues and cell lines.

Note: This product is for in vitro research use only and is not intended for use in humans or animals.