

LORF2 Antibody

Catalog No: #SAB505

Package Size: #SAB505-1 50ul #SAB505-2 100ul

Orders: order@signalwayantibody.comSupport: tech@signalwayantibody.com

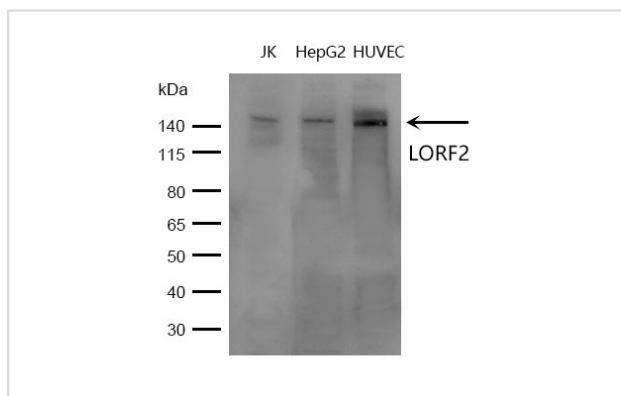
Description

Product Name	LORF2 Antibody
Host Species	Rabbit
Clonality	Polyclonal
Purification	Antibodies were produced by immunizing rabbits with synthetic peptide and KLH conjugates. Antibodies were purified by affinity-chromatography using epitope-specific peptide.
Applications	Custom antibody
Species Reactivity	Hu
Immunogen Type	Peptide-KLH
Target Name	LORF2
Other Names	ORF2p ω Reverse transcriptase ω Endonuclease
Accession No.	uniprot:O00370
Calculated MW	149kDa
Formulation	Supplied at 1.0mg/mL in phosphate buffered saline (without Mg ²⁺ and Ca ²⁺), pH 7.4, 150mM NaCl, 0.02% sodium azide and 132% glycerol.
Storage	Store at -20°C for long term preservation (recommended). Store at 4°C for short term use.

Application Details

Western blotting: 1:500~1:1000

Images



Western blot analysis of lysates from JK, HepG2, HUVEC.

Background

Has a reverse transcriptase activity required for target-primed reverse transcription of the LINE-1 element mRNA, a crucial step in LINE-1 retrotransposition. Has also an endonuclease activity that allows the introduction of nicks in the chromosomal target DNA. Cleaves DNA in AT-rich regions between a 5' stretch of purines and a 3' stretch of pyrimidines, corresponding to sites of LINE-1 integration in the genome.

Note: This product is for in vitro research use only and is not intended for use in humans or animals.