

EEF2 Rabbit Polyclonal Antibody

Catalog No: #53010

Package Size: #53010-1 50ul #53010-2 100ul

Orders: order@signalwayantibody.comSupport: tech@signalwayantibody.com

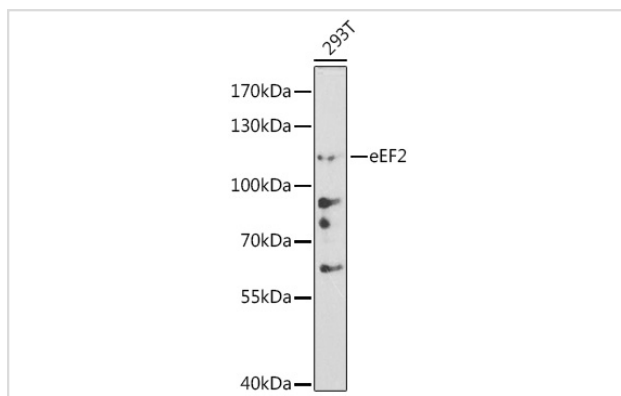
Description

Product Name	EEF2 Rabbit Polyclonal Antibody
Host Species	Rabbit
Clonality	Polyclonal
Isotype	IgG
Purification	Affinity purification
Applications	WB
Species Reactivity	Human
Immunogen Description	Recombinant fusion protein of human eEF2 (NP_001952.1).
Other Names	EEF2;EEF-2;EF-2;EF2;SCA26
Accession No.	Uniprot:P13639GeneID:1938
Calculated MW	95kDa
SDS-PAGE MW	110kDa
Formulation	PBS with 0.02% sodium azide,50% glycerol,pH7.3.
Storage	Store at -20°C. Avoid freeze / thaw cycles.

Application Details

WB □ 1:500 - 1:2000

Images



Western blot analysis of extracts of 293T cells, using eEF2 antibody.

Background

This gene encodes a member of the GTP-binding translation elongation factor family. This protein is an essential factor for protein synthesis. It promotes the GTP-dependent translocation of the nascent protein chain from the A-site to the P-site of the ribosome. This protein is completely inactivated by EF-2 kinase phosphorylation.

Note: This product is for in vitro research use only and is not intended for use in humans or animals.