

N-Cadherin Rabbit Polyclonal Antibody

Catalog No: #53039

Package Size: #53039-1 50ul #53039-2 100ul

Orders: order@signalwayantibody.comSupport: tech@signalwayantibody.com

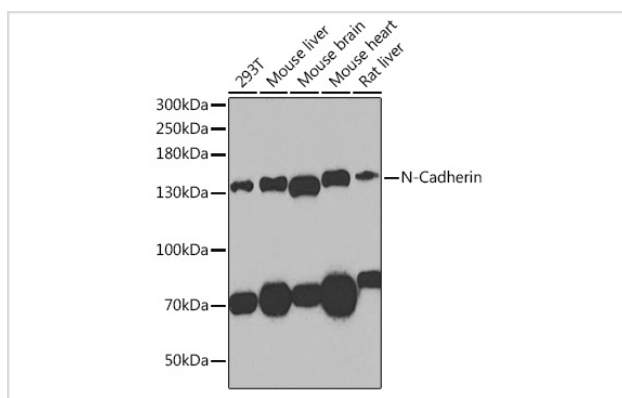
Description

Product Name	N-Cadherin Rabbit Polyclonal Antibody
Host Species	Rabbit
Clonality	Polyclonal
Isotype	IgG
Purification	Affinity purification
Applications	WB
Species Reactivity	Human,Mouse,Rat
Immunogen Description	A synthetic peptide of human N-Cadherin (NP_001783.2).
Other Names	CD325;CDHN;CDw325;NCAD;N Cadherin;CDH2
Accession No.	Uniprot:P19022GeneID:1000
Calculated MW	97kDa/99kDa
SDS-PAGE MW	140kDa
Formulation	PBS with 0.02% sodium azide,50% glycerol,pH7.3.
Storage	Store at -20°C. Avoid freeze / thaw cycles.

Application Details

WB □ 1:500 - 1:2000

Images



Western blot analysis of extracts of various cell lines, using N-Cadherin antibody.

Background

This gene encodes a classical cadherin and member of the cadherin superfamily. Alternative splicing results in multiple transcript variants, at least one of which encodes a preproprotein is proteolytically processed to generate a calcium-dependent cell adhesion molecule and glycoprotein. This protein plays a role in the establishment of left-right asymmetry, development of the nervous system and the formation of cartilage and bone.

Note: This product is for in vitro research use only and is not intended for use in humans or animals.