

EIF4E Rabbit Polyclonal Antibody

Catalog No: #53043

Package Size: #53043-1 50ul #53043-2 100ul

Orders: order@signalwayantibody.comSupport: tech@signalwayantibody.com

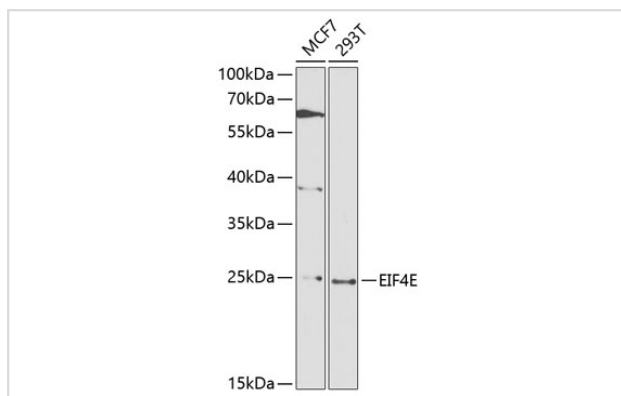
Description

Product Name	EIF4E Rabbit Polyclonal Antibody
Host Species	Rabbit
Clonality	Polyclonal
Isotype	IgG
Purification	Affinity purification
Applications	WB,IF
Species Reactivity	Human
Immunogen Description	Recombinant fusion protein of human EIF4E (NP_001959.1).
Other Names	AUTS19;CBP;EIF4E1;EIF4EL1;EIF4F;eIF-4E;EIF4E
Accession No.	Swiss Prot:P06730GeneID:1977
Calculated MW	25kDa/27kDa/28kDa
SDS-PAGE MW	24kDa
Formulation	Buffer: PBS with 0.02% sodium azide,50% glycerol,pH7.3.
Storage	Store at -20°C. Avoid freeze / thaw cycles.

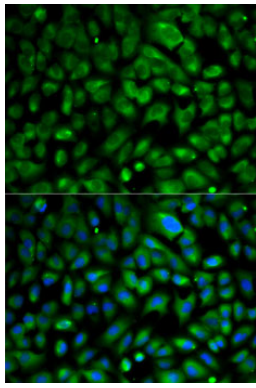
Application Details

WB □ 1:500 - 1:2000 IF □ 1:50 - 1:200

Images



Western blot analysis of extracts of various cell lines, using EIF4E at 1:1000 dilution.



Immunofluorescence analysis of MCF7 cells using EIF4E .
Blue: DAPI for nuclear staining.

Background

The protein encoded by this gene is a component of the eukaryotic translation initiation factor 4F complex, which recognizes the 7-methylguanosine cap structure at the 5' end of messenger RNAs. The encoded protein aids in translation initiation by recruiting ribosomes to the 5'-cap structure. Association of this protein with the 4F complex is the rate-limiting step in translation initiation. This gene acts as a proto-oncogene, and its expression and activation is associated with transformation and tumorigenesis. Several pseudogenes of this gene are found on other chromosomes. Alternative splicing results in multiple transcript variants.

Note: This product is for in vitro research use only and is not intended for use in humans or animals.