

ENDO G Rabbit Polyclonal Antibody

Catalog No: #53055



Package Size: #53055-1 50ul #53055-2 100ul

Orders: order@signalwayantibody.comSupport: tech@signalwayantibody.com

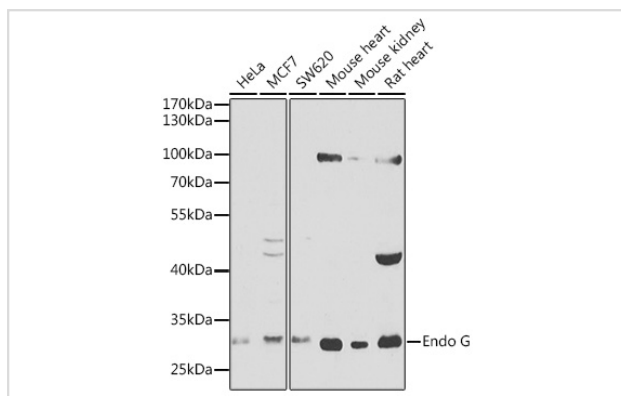
Description

Product Name	ENDO G Rabbit Polyclonal Antibody
Host Species	Rabbit
Clonality	Polyclonal
Isotype	IgG
Purification	Affinity purification
Applications	WB
Species Reactivity	Human,Mouse,Rat
Immunogen Description	Recombinant fusion protein of human Endo G (NP_004426.2).
Other Names	ENDO G
Accession No.	Uniprot:Q14249GeneID:2021
Calculated MW	32kDa
SDS-PAGE MW	33kDa
Formulation	PBS with 0.02% sodium azide,50% glycerol,pH7.3.
Storage	Store at -20°C. Avoid freeze / thaw cycles.

Application Details

WB □ 1:500 - 1:2000

Images



Western blot analysis of extracts of various cell lines, using Endo G antibody.

Background

The protein encoded by this gene is a nuclear encoded endonuclease that is localized in the mitochondrion. The encoded protein is widely distributed among animals and cleaves DNA at GC tracts. This protein is capable of generating the RNA primers required by DNA polymerase gamma to initiate replication of mitochondrial DNA.

Published Papers

el at., Ischemic stroke protected by ISO-1 inhibition of apoptosis via mitochondrial pathwayInSci RepOn2023 Feb 16byWanli Ji?1?2,?Yaoxin Ren et al..PMID: 36797398, , (2023)

[PMID:36797398](#)

el at., The protective effect and mechanism of ISO-1 in cerebral ischemia/reperfusion injury, , (2022)

[PMID:](#)

Note: This product is for in vitro research use only and is not intended for use in humans or animals.