

EZR Rabbit Polyclonal Antibody

Catalog No: #53062



Package Size: #53062-1 50ul #53062-2 100ul

Orders: order@signalwayantibody.com

Support: tech@signalwayantibody.com

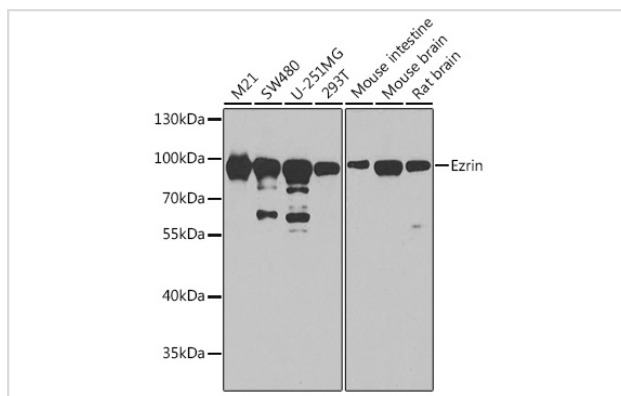
Description

Product Name	EZR Rabbit Polyclonal Antibody
Host Species	Rabbit
Clonality	Polyclonal
Isotype	IgG
Purification	Affinity purification
Applications	WB,IF
Species Reactivity	Human,Mouse,Rat
Immunogen Description	Recombinant fusion protein of human Ezrinin (NP_003370.2).
Other Names	CVIL;CVL;HEL-S-105;VIL2;EZR;Ezrin;ezrin
Accession No.	Uniprot:P15311GenelD:7430
Calculated MW	69kDa
SDS-PAGE MW	90kDa
Formulation	PBS with 0.02% sodium azide,50% glycerol,pH7.3.
Storage	Store at -20°C. Avoid freeze / thaw cycles.

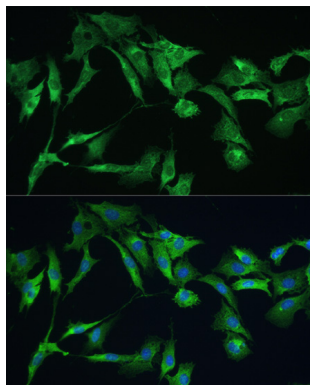
Application Details

WB □ 1:500 - 1:2000 IF □ 1:50 - 1:100

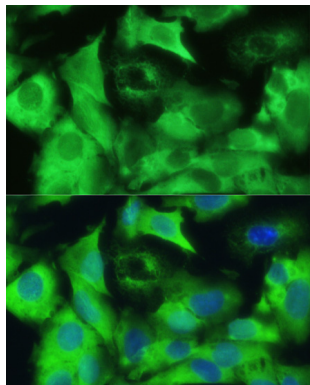
Images



Western blot analysis of extracts of various cell lines, using Ezrinin antibody.



Immunofluorescence analysis of C6 cells using Ezrinin antibody.



Immunofluorescence analysis of U-2 OS cells using Ezrinin antibody.

Background

The cytoplasmic peripheral membrane protein encoded by this gene functions as a protein-tyrosine kinase substrate in microvilli. As a member of the ERM protein family, this protein serves as an intermediate between the plasma membrane and the actin cytoskeleton. This protein plays a key role in cell surface structure adhesion, migration and organization, and it has been implicated in various human cancers. A pseudogene located on chromosome 3 has been identified for this gene. Alternatively spliced variants have also been described for this gene.

Note: This product is for in vitro research use only and is not intended for use in humans or animals.