

ERBB4 Rabbit Polyclonal Antibody

Catalog No: #53069

Package Size: #53069-1 50ul #53069-2 100ul

Orders: order@signalwayantibody.comSupport: tech@signalwayantibody.com

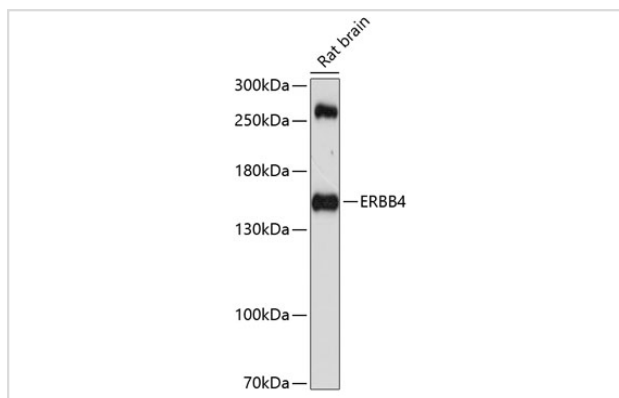
Description

Product Name	ERBB4 Rabbit Polyclonal Antibody
Host Species	Rabbit
Clonality	Polyclonal
Isotype	IgG
Purification	Affinity purification
Applications	WB,IF
Species Reactivity	Human,Rat
Immunogen Description	A synthetic peptide of human ERBB4 (NP_005226.1).
Other Names	ALS19;HER4;p180erbB4;ERBB4;HER4/ErbB4
Accession No.	Swiss Prot:Q15303GeneID:2066
Calculated MW	143kDa/145kDa/146kDa
SDS-PAGE MW	147kDa
Formulation	Buffer: PBS with 0.02% sodium azide,50% glycerol,pH7.3.
Storage	Store at -20°C. Avoid freeze / thaw cycles.

Application Details

WB □ 1:500 - 1:2000 IF □ 1:50 - 1:200

Images



Western blot analysis of extracts of rat brain, using ERBB4 at 1:1000 dilution.

Background

This gene is a member of the Tyr protein kinase family and the epidermal growth factor receptor subfamily. It encodes a single-pass type I membrane protein with multiple cysteine rich domains, a transmembrane domain, a tyrosine kinase domain, a phosphatidylinositol-3 kinase binding site and a PDZ domain binding motif. The protein binds to and is activated by neuregulins and other factors and induces a variety of cellular responses including mitogenesis and differentiation. Multiple proteolytic events allow for the release of a cytoplasmic fragment and an extracellular fragment. Mutations in this gene have been associated with cancer. Alternatively spliced variants which encode different protein isoforms have been described; however, not all variants have been fully characterized.

Note: This product is for in vitro research use only and is not intended for use in humans or animals.