

EIF2S1 Rabbit Polyclonal Antibody

Catalog No: #53070



Package Size: #53070-1 50ul #53070-2 100ul

Orders: order@signalwayantibody.com

Support: tech@signalwayantibody.com

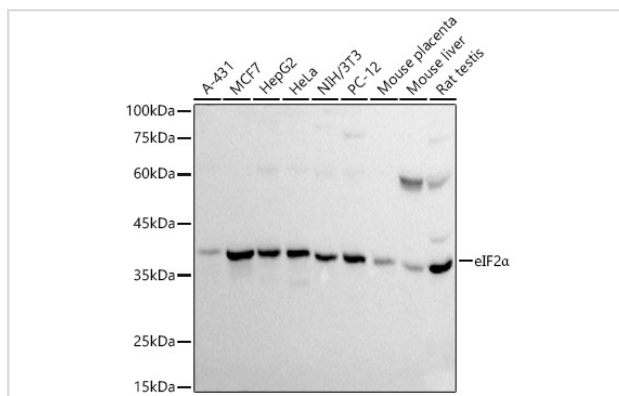
Description

Product Name	EIF2S1 Rabbit Polyclonal Antibody
Host Species	Rabbit
Clonality	Polyclonal
Isotype	IgG
Purification	Affinity purification
Applications	WB,IF
Species Reactivity	Human,Mouse,Rat
Immunogen Description	Recombinant fusion protein of human eIF2 α (NP_004085.1).
Other Names	EIF-2;EIF-2A;EIF-2alpha;EIF2;EIF2A;EIF2S1
Accession No.	Uniprot:P05198GeneID:1965
Calculated MW	36kDa
SDS-PAGE MW	38KDa
Formulation	PBS with 0.02% sodium azide,50% glycerol,pH7.3.
Storage	Store at -20°C. Avoid freeze / thaw cycles.

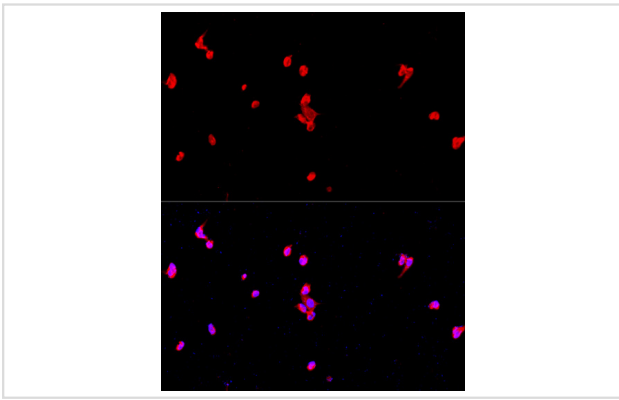
Application Details

WB 1:500 - 1:1000 IF 1:50 - 1:200

Images



Western blot analysis of extracts of various cell lines, using eIF2 α antibody.



Immunofluorescence analysis of PC-12 cells using eIF2α antibody.

Background

The translation initiation factor EIF2 catalyzes the first regulated step of protein synthesis initiation, promoting the binding of the initiator tRNA to 40S ribosomal subunits. Binding occurs as a ternary complex of methionyl-tRNA, EIF2, and GTP. EIF2 is composed of 3 nonidentical subunits, the 36-kD EIF2-alpha subunit (EIF2S1), the 38-kD EIF2-beta subunit (EIF2S2; MIM 603908), and the 52-kD EIF2-gamma subunit (EIF2S3; MIM 300161). The rate of formation of the ternary complex is modulated by the phosphorylation state of EIF2-alpha (Ernst et al., 1987 [PubMed 2948954]).[supplied by OMIM, Feb 2010]

Note: This product is for in vitro research use only and is not intended for use in humans or animals.