

TRAF3 Rabbit Polyclonal Antibody

Catalog No: #53085

Package Size: #53085-1 50ul #53085-2 100ul

Orders: order@signalwayantibody.com

Support: tech@signalwayantibody.com

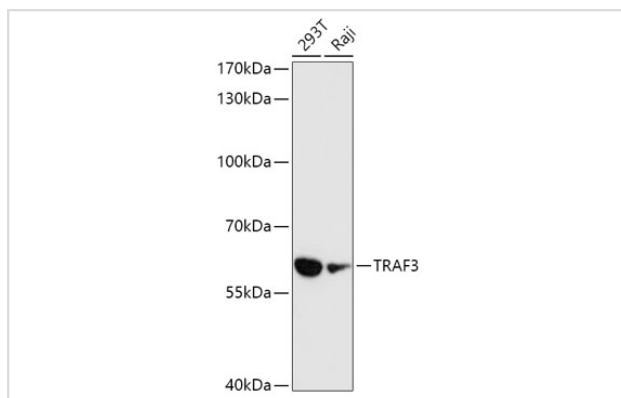
Description

Product Name	TRAF3 Rabbit Polyclonal Antibody
Host Species	Rabbit
Clonality	Polyclonal
Isotype	IgG
Purification	Affinity purification
Applications	WB
Species Reactivity	Human,Mouse,Rat
Immunogen Description	A synthetic peptide of human TRAF3 (NP_003291.2).
Other Names	TRAF3;CAP-1;CAP1;CD40bp;CRAF1;IIAE5;LAP1
Accession No.	Uniprot:Q13114GeneID:7187
Calculated MW	55kDa/64kDa
SDS-PAGE MW	64kDa
Formulation	PBS with 0.02% sodium azide,50% glycerol,pH7.3.
Storage	Store at -20°C. Avoid freeze / thaw cycles.

Application Details

WB □ 1:200 - 1:1000

Images



Western blot analysis of extracts of various cell lines, using TRAF3 antibody.

Background

The protein encoded by this gene is a member of the TNF receptor associated factor (TRAF) protein family. TRAF proteins associate with, and mediate the signal transduction from, members of the TNF receptor (TNFR) superfamily. This protein participates in the signal transduction of CD40, a TNFR family member important for the activation of the immune response. This protein is found to be a critical component of the lymphotoxin-beta receptor (LTbetaR) signaling complex, which induces NF-kappaB activation and cell death initiated by LTbeta ligation. Epstein-Barr virus encoded latent infection membrane protein-1 (LMP1) can interact with this and several other members of the TRAF family, which may be essential for the oncogenic effects of LMP1. Several alternatively spliced transcript variants encoding three distinct isoforms have been reported.

Note: This product is for in vitro research use only and is not intended for use in humans or animals.