

ETHE1 Rabbit Polyclonal Antibody

Catalog No: #53117

Package Size: #53117-1 50ul #53117-2 100ul

Orders: order@signalwayantibody.comSupport: tech@signalwayantibody.com

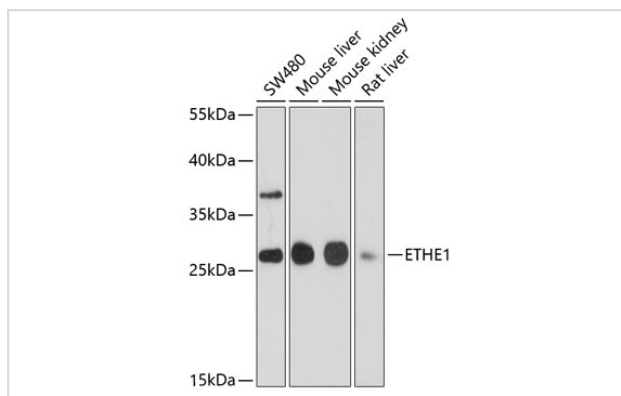
Description

Product Name	ETHE1 Rabbit Polyclonal Antibody
Host Species	Rabbit
Clonality	Polyclonal
Isotype	IgG
Purification	Affinity purification
Applications	WB,IHC,IF
Species Reactivity	Human,Mouse,Rat
Immunogen Description	Recombinant fusion protein of human ETHE1 (NP_055112.2).
Other Names	ETHE1;HSCO;YF13H12
Accession No.	Swiss Prot:O95571GeneID:23474
Calculated MW	27kDa
SDS-PAGE MW	28kDa
Formulation	Buffer: PBS with 0.02% sodium azide,50% glycerol,pH7.3.
Storage	Store at -20°C. Avoid freeze / thaw cycles.

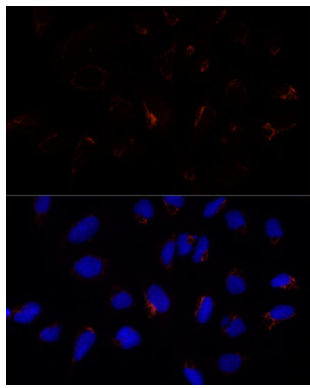
Application Details

WB □ 1:200 - 1:1000 IHC □ 1:50 - 1:200 IF □ 1:50 - 1:200

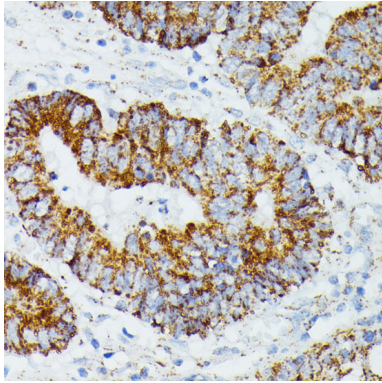
Images



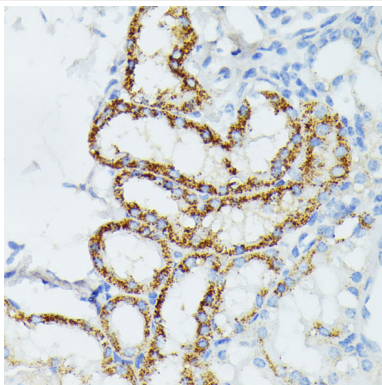
Western blot analysis of extracts of various cell lines, using ETHE1 at 1:1000 dilution.



Immunofluorescence analysis of U-2 OS cells using ETHE1 Polyclonal at dilution of 1:100 (40x lens). Blue: DAPI for nuclear staining.



Immunohistochemistry of paraffin-embedded human colon carcinoma using ETHE1 at dilution of 1:100 (40x lens).



Immunohistochemistry of paraffin-embedded mouse kidney using ETHE1 at dilution of 1:100 (40x lens).

Background

This gene encodes a member of the metallo beta-lactamase family of iron-containing proteins involved in the mitochondrial sulfide oxidation pathway. The encoded protein catalyzes the oxidation of a persulfide substrate to sulfite. Certain mutations in this gene cause ethylmalonic encephalopathy, an infantile metabolic disorder affecting the brain, gastrointestinal tract and peripheral vessels. Alternative splicing results in multiple transcript variants encoding different isoforms.

Note: This product is for in vitro research use only and is not intended for use in humans or animals.