

NR2F2 Rabbit Polyclonal Antibody

Catalog No: #53133

Package Size: #53133-1 50ul #53133-2 100ul

Orders: order@signalwayantibody.comSupport: tech@signalwayantibody.com

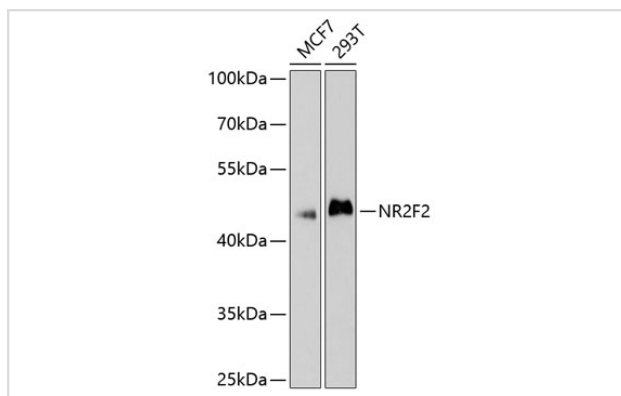
Description

Product Name	NR2F2 Rabbit Polyclonal Antibody
Host Species	Rabbit
Clonality	Polyclonal
Isotype	IgG
Purification	Affinity purification
Applications	WB,IHC,IF
Species Reactivity	Human,Mouse,Rat
Immunogen Description	A synthetic peptide of human NR2F2 (NP_066285.1).
Other Names	NR2F2;ARP1;CHTD4;COUPTFB;COUPTFII;NF-E3;NR2F1;SVP40;TFCOUP2
Accession No.	Swiss Prot:P24468GeneID:7026
Calculated MW	29kDa/31kDa/45kDa
SDS-PAGE MW	45kDa
Formulation	Buffer: PBS with 0.02% sodium azide,50% glycerol,pH7.3.
Storage	Store at -20°C. Avoid freeze / thaw cycles.

Application Details

WB □ 1:500 - 1:2000 IHC □ 1:50 - 1:200 IF □ 1:50 - 1:200

Images



Western blot analysis of extracts of various cell lines, using NR2F2 at 1:1000 dilution.

Background

This gene encodes a member of the steroid thyroid hormone superfamily of nuclear receptors. The encoded protein is a ligand inducible transcription factor that is involved in the regulation of many different genes. Alternate splicing results in multiple transcript variants.

Note: This product is for in vitro research use only and is not intended for use in humans or animals.