

## EIF2B3 Rabbit Polyclonal Antibody

Catalog No: #53137

Package Size: #53137-1 50ul #53137-2 100ul

Orders: order@signalwayantibody.com

Support: tech@signalwayantibody.com

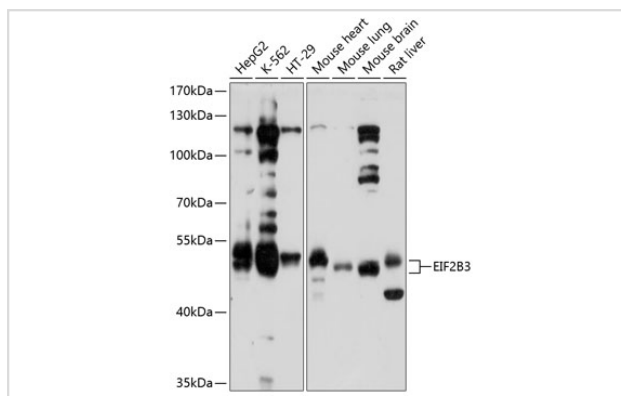
## Description

Product Name	EIF2B3 Rabbit Polyclonal Antibody
Host Species	Rabbit
Clonality	Polyclonal
Isotype	IgG
Purification	Affinity purification
Applications	WB,IHC,IF
Species Reactivity	Human,Mouse,Rat
Immunogen Description	Recombinant fusion protein of human EIF2B3 (NP_065098.1).
Other Names	EIF2B3;EIF-2B;EIF2Bgamma
Accession No.	Uniprot:Q9NR50GeneID:8891
Calculated MW	44kDa/46kDa/50kDa
SDS-PAGE MW	50kDa
Formulation	PBS with 0.02% sodium azide,50% glycerol,pH7.3.
Storage	Store at -20°C. Avoid freeze / thaw cycles.

## Application Details

WB □ 1:500 - 1:2000 IHC □ 1:50 - 1:200 IF □ 1:50 - 1:200

## Images



Western blot analysis of extracts of various cell lines, using EIF2B3 antibody.

## Background

The protein encoded by this gene is one of the subunits of initiation factor eIF2B, which catalyzes the exchange of eukaryotic initiation factor 2-bound GDP for GTP. It has also been found to function as a cofactor of hepatitis C virus internal ribosome entry site-mediated translation. Mutations in this gene have been associated with leukodystrophy with vanishing white matter. Alternatively spliced transcript variants encoding different isoforms have been found for this gene.

---

Note: This product is for in vitro research use only and is not intended for use in humans or animals.