

## DDAH1 Rabbit Polyclonal Antibody

Catalog No: #29245



Package Size: #29245-1 50ul #29245-2 100ul

Orders: order@signalwayantibody.com

Support: tech@signalwayantibody.com

## Description

Product Name	DDAH1 Rabbit Polyclonal Antibody
Host Species	Rabbit
Clonality	Polyclonal
Isotype	IgG
Purification	Affinity purification
Applications	WB,IF
Species Reactivity	Human,Mouse,Rat
Immunogen Description	Recombinant fusion protein of human DDAH1 (NP_036269.1).
Other Names	DDAH1;DDAH;DDAH-1;DDAHI;HEL-S-16
Accession No.	Swiss Prot:O94760GeneID:23576
Calculated MW	20kDa/31kDa
SDS-PAGE MW	37kDa
Formulation	Buffer: PBS with 0.02% sodium azide,50% glycerol,pH7.3.
Storage	Store at -20°C. Avoid freeze / thaw cycles.

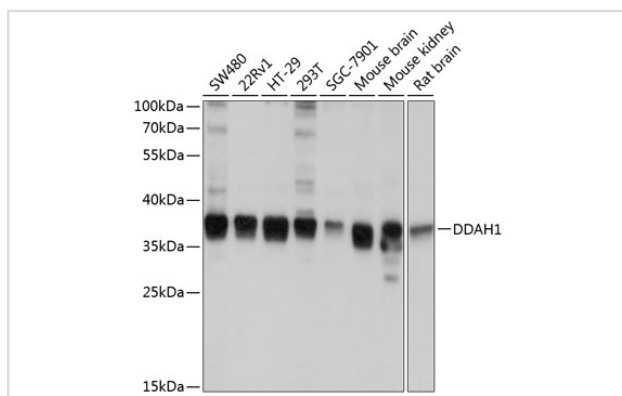
## Application Details

WB □ 1:500 - 1:2000

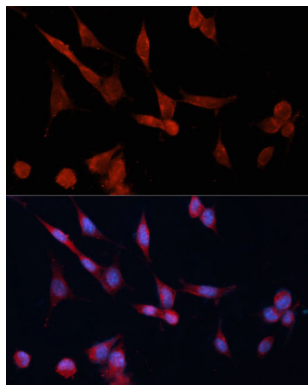
IF □ 1:50 - 1:200

IP □ 1:50 - 1:200

## Images



Western blot analysis of extracts of various cell lines, using DDAH1 at 1:1000 dilution.



Immunofluorescence analysis of NIH-3T3 cells using DDAH1 Polyclonal at dilution of 1:100 (40x lens). Blue: DAPI for nuclear staining.

## Background

This gene belongs to the dimethylarginine dimethylaminohydrolase (DDAH) gene family. The encoded enzyme plays a role in nitric oxide generation by regulating cellular concentrations of methylarginines, which in turn inhibit nitric oxide synthase activity.

Note: This product is for in vitro research use only and is not intended for use in humans or animals.