

# ANO1 Rabbit Polyclonal Antibody

Catalog No: #53175



Package Size: #53175-1 50ul #53175-2 100ul

Orders: [order@signalwayantibody.com](mailto:order@signalwayantibody.com)

Support: [tech@signalwayantibody.com](mailto:tech@signalwayantibody.com)

## Description

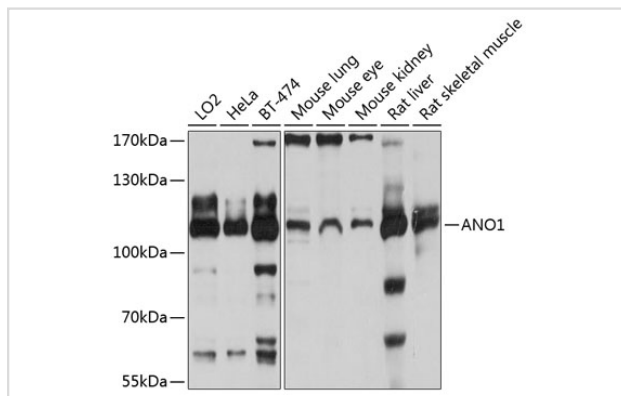
Product Name	ANO1 Rabbit Polyclonal Antibody
Host Species	Rabbit
Clonality	Polyclonal
Isotype	IgG
Purification	Affinity purification
Applications	WB,IF
Species Reactivity	Human,Mouse
Immunogen Description	Recombinant fusion protein of human ANO1 (NP_060513.5).
Other Names	ANO1;DOG1;ORAOV2;TAOS2;TMEM16A
Accession No.	Swiss Prot:Q5XXA6GeneID:55107
Calculated MW	74kDa/97kDa/114kDa
SDS-PAGE MW	111kDa
Formulation	Buffer: PBS with 0.02% sodium azide,50% glycerol,pH7.3.
Storage	Store at -20°C. Avoid freeze / thaw cycles.

## Application Details

WB □ 1:1000 - 1:2000

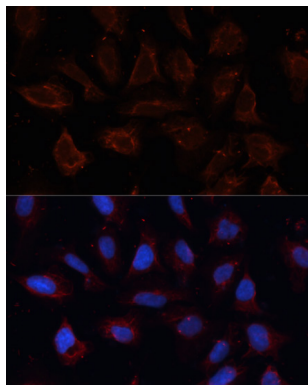
IF □ 1:100 - 1:200

## Images



Western blot analysis of extracts of various cell lines, using ANO1 at 1:1000 dilution.

Immunofluorescence analysis of U2OS cells using ANO1 at dilution of 1:100. Blue: DAPI for nuclear staining.



## Background

-

Note: This product is for in vitro research use only and is not intended for use in humans or animals.