

LRP8 Rabbit Polyclonal Antibody

Catalog No: #53179

Package Size: #53179-1 50ul #53179-2 100ul

Orders: order@signalwayantibody.com

Support: tech@signalwayantibody.com

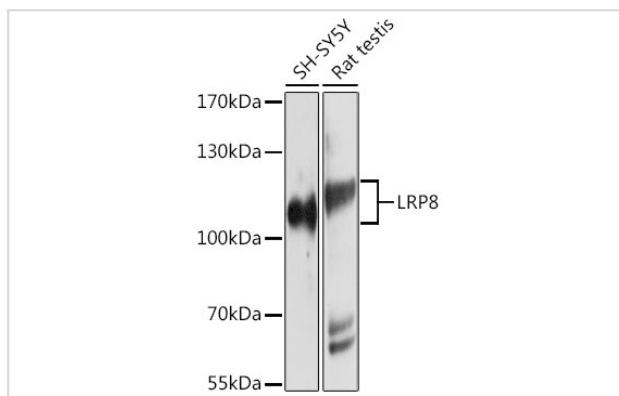
Description

Product Name	LRP8 Rabbit Polyclonal Antibody
Host Species	Rabbit
Clonality	Polyclonal
Isotype	IgG
Purification	Affinity purification
Applications	WB,IHC,IF
Species Reactivity	Human,Mouse,Rat
Immunogen Description	A synthetic peptide of human LRP8 (NP_004622.2).
Other Names	LRP8;APOER2;HSZ75190;LRP-8;MCI1
Accession No.	Swiss Prot:Q14114GeneID:7804
Calculated MW	77kDa/87kDa/99kDa/105kDa
SDS-PAGE MW	105-120kDa
Formulation	Buffer: PBS with 0.02% sodium azide,50% glycerol,pH7.3.
Storage	Store at -20°C. Avoid freeze / thaw cycles.

Application Details

WB □ 1:500 - 1:2000 IHC □ 1:50 - 1:200 IF □ 1:50 - 1:200

Images



Western blot analysis of extracts of various cell lines, using LRP8 at 1:1000 dilution.

Background

This gene encodes a member of the low density lipoprotein receptor (LDLR) family. Low density lipoprotein receptors are cell surface proteins that play roles in both signal transduction and receptor-mediated endocytosis of specific ligands for lysosomal degradation. The encoded protein plays a critical role in the migration of neurons during development by mediating Reelin signaling, and also functions as a receptor for the cholesterol transport protein apolipoprotein E. Expression of this gene may be a marker for major depressive disorder. Alternatively spliced transcript variants encoding multiple isoforms have been observed for this gene.

Note: This product is for in vitro research use only and is not intended for use in humans or animals.