

DVL1 Rabbit Polyclonal Antibody

Catalog No: #53180

Package Size: #53180-1 50ul #53180-2 100ul

Orders: order@signalwayantibody.comSupport: tech@signalwayantibody.com

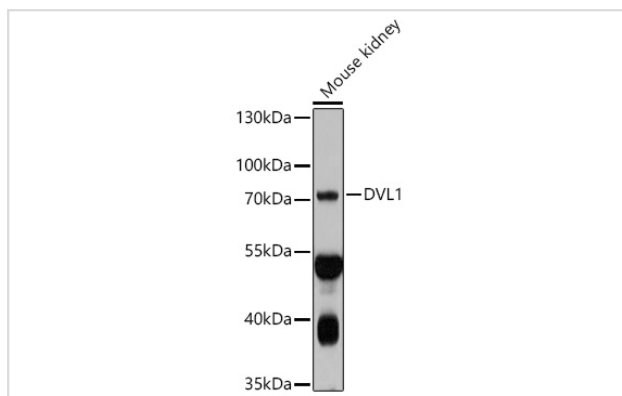
Description

Product Name	DVL1 Rabbit Polyclonal Antibody
Host Species	Rabbit
Clonality	Polyclonal
Isotype	IgG
Purification	Affinity purification
Applications	WB,IHC
Species Reactivity	Human,Mouse,Rat
Immunogen Description	Recombinant fusion protein of human DVL1 (NP_004412.2).
Other Names	DVL1;DRS2;DVL;DVL1L1;DVL1P1
Accession No.	Uniprot:O14640GeneID:1855
Calculated MW	72kDa/75kDa
SDS-PAGE MW	72kDa
Formulation	PBS with 0.02% sodium azide,50% glycerol,pH7.3.
Storage	Store at -20°C. Avoid freeze / thaw cycles.

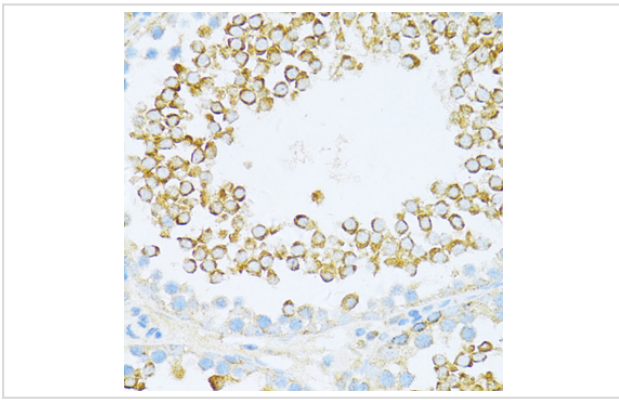
Application Details

WB □ 1:500 - 1:2000 IHC □ 1:50 - 1:200

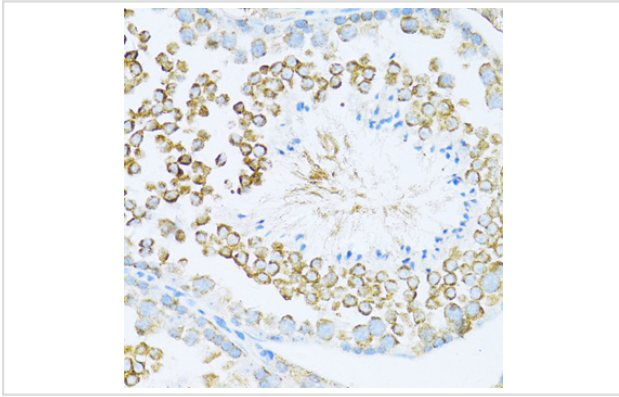
Images



Western blot analysis of extracts of Mouse kidney, using DVL1 antibody.



Immunohistochemistry of paraffin-embedded rat testis using DVL1 antibody.



Immunohistochemistry of paraffin-embedded mouse testis using DVL1 antibody.

Background

DVL1, the human homolog of the *Drosophila* dishevelled gene (*dsh*) encodes a cytoplasmic phosphoprotein that regulates cell proliferation, acting as a transducer molecule for developmental processes, including segmentation and neuroblast specification. DVL1 is a candidate gene for neuroblastomatous transformation. The Schwartz-Jampel syndrome and Charcot-Marie-Tooth disease type 2A have been mapped to the same region as DVL1. The phenotypes of these diseases may be consistent with defects which might be expected from aberrant expression of a DVL gene during development.

Note: This product is for in vitro research use only and is not intended for use in humans or animals.