

ZP1 Rabbit Polyclonal Antibody

Catalog No: #53197



Package Size: #53197-1 50ul #53197-2 100ul

Orders: order@signalwayantibody.comSupport: tech@signalwayantibody.com

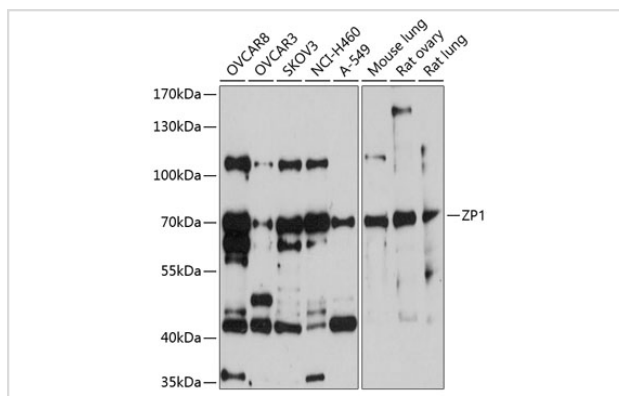
Description

Product Name	ZP1 Rabbit Polyclonal Antibody
Host Species	Rabbit
Clonality	Polyclonal
Isotype	IgG
Purification	Affinity purification
Applications	WB
Species Reactivity	Human,Mouse,Rat
Immunogen Description	Recombinant fusion protein of human ZP1 (NP_997224.2).
Other Names	ZP1;HEL163;OOMD;OOMD1
Accession No.	Uniprot:P60852GeneID:22917
Calculated MW	70kDa
SDS-PAGE MW	70kDa
Formulation	PBS with 0.02% sodium azide,50% glycerol,pH7.3.
Storage	Store at -20°C. Avoid freeze / thaw cycles.

Application Details

WB □ 1:500 - 1:2000

Images



Western blot analysis of extracts of various cell lines, using ZP1 antibody.

Background

The zona pellucida is an extracellular matrix that surrounds the oocyte and early embryo. It is composed primarily of three or four glycoproteins with various functions during fertilization and preimplantation development. The protein encoded by this gene ensures the structural integrity of the zona pellucida. Mutations in this gene are a cause of oocyte maturation defect and infertility.

Note: This product is for in vitro research use only and is not intended for use in humans or animals.