

DES Rabbit Polyclonal Antibody

Catalog No: #53220

Package Size: #53220-1 50ul #53220-2 100ul

Orders: order@signalwayantibody.com

Support: tech@signalwayantibody.com

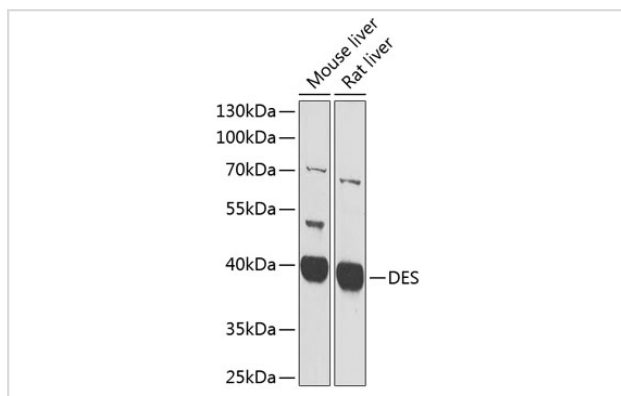
Description

Product Name	DES Rabbit Polyclonal Antibody
Host Species	Rabbit
Clonality	Polyclonal
Isotype	IgG
Purification	Affinity purification
Applications	WB,IF
Species Reactivity	Mouse,Rat
Immunogen Description	Recombinant fusion protein of human DES (NP_001918.3).
Other Names	DES;CSM1;CSM2;LGMD2R;desmin;Desmin
Accession No.	Swiss Prot:P17661GeneID:1674
Calculated MW	53kDa
SDS-PAGE MW	38kDa
Formulation	Buffer: PBS with 0.02% sodium azide,50% glycerol,pH7.3.
Storage	Store at -20°C. Avoid freeze / thaw cycles.

Application Details

WB □ 1:500 - 1:2000 IF □ 1:50 - 1:200

Images



Western blot analysis of extracts of various cell lines, using DES at 1:1000 dilution.

Background

This gene encodes a muscle-specific class III intermediate filament. Homopolymers of this protein form a stable intracytoplasmic filamentous network connecting myofibrils to each other and to the plasma membrane. Mutations in this gene are associated with desmin-related myopathy, a familial cardiac and skeletal myopathy (CSM), and with distal myopathies.

Note: This product is for in vitro research use only and is not intended for use in humans or animals.