

NF- $\kappa$ B p65 Rabbit Polyclonal Antibody

Catalog No: #53228

Package Size: #53228-1 50ul #53228-2 100ul

Orders: order@signalwayantibody.com

Support: tech@signalwayantibody.com

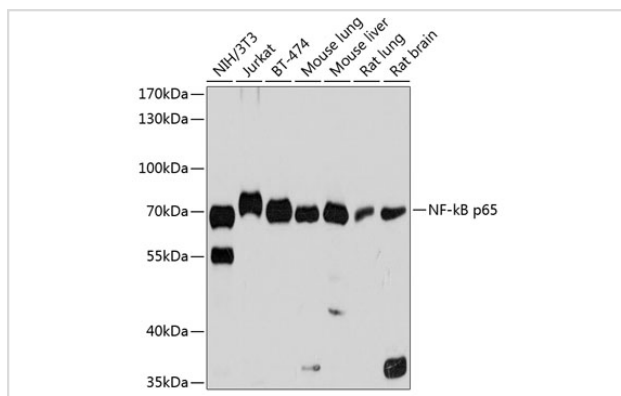
## Description

Product Name	NF- $\kappa$ B p65 Rabbit Polyclonal Antibody
Host Species	Rabbit
Clonality	Polyclonal
Isotype	IgG
Purification	Affinity purification
Applications	WB,IF
Species Reactivity	Human,Mouse,Rat
Immunogen Description	A synthetic peptide of human NF- $\kappa$ B p65 (NP_068810.3).
Other Names	NFKB3;p65;NF- $\kappa$ B p65;RELA;CMCU
Accession No.	Swiss Prot:Q04206GeneID:5970
Calculated MW	58kDa/59kDa/60kDa
SDS-PAGE MW	65kDa
Formulation	Buffer: PBS with 0.02% sodium azide,50% glycerol,pH7.3.
Storage	Store at -20°C. Avoid freeze / thaw cycles.

## Application Details

WB  $\square$  1:500 - 1:2000 IF  $\square$  1:50 - 1:200

## Images



Western blot analysis of extracts of various cell lines, using NF- $\kappa$ B p65 at 1:1000 dilution.

## Background

NF- $\kappa$ B is a ubiquitous transcription factor involved in several biological processes. It is held in the cytoplasm in an inactive state by specific inhibitors. Upon degradation of the inhibitor, NF- $\kappa$ B moves to the nucleus and activates transcription of specific genes. NF- $\kappa$ B is composed of NFKB1 or NFKB2 bound to either REL, RELA, or RELB. The most abundant form of NF- $\kappa$ B is NFKB1 complexed with the product of this gene, RELA. Four transcript variants encoding different isoforms have been found for this gene.

---

Note: This product is for in vitro research use only and is not intended for use in humans or animals.