

## EGFR Rabbit Polyclonal Antibody

Catalog No: #53234



Package Size: #53234-1 50ul #53234-2 100ul

Orders: [order@signalwayantibody.com](mailto:order@signalwayantibody.com)Support: [tech@signalwayantibody.com](mailto:tech@signalwayantibody.com)

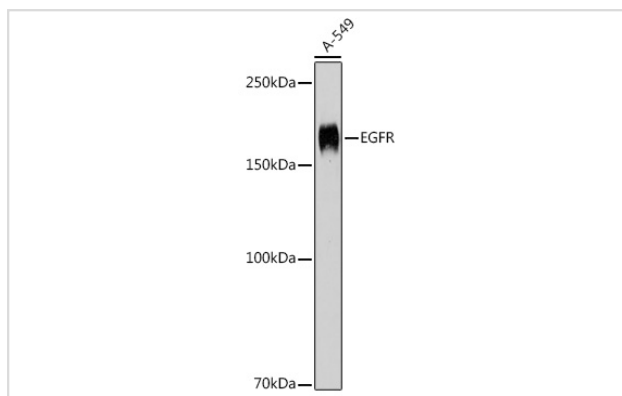
## Description

Product Name	EGFR Rabbit Polyclonal Antibody
Host Species	Rabbit
Clonality	Polyclonal
Isotype	IgG
Purification	Affinity purification
Applications	WB,IHC
Species Reactivity	Human,Mouse,Rat
Immunogen Description	Recombinant fusion protein of human EGFR (NP_005219.2).
Other Names	EGFR;ERBB;ERBB1;HER1;NISBD2;PIG61;mENA
Accession No.	Uniprot:P00533GeneID:1956
Calculated MW	44kDa/69kDa/77kDa/134kDa
SDS-PAGE MW	175KDa
Formulation	PBS with 0.02% sodium azide,50% glycerol,pH7.3.
Storage	Store at -20°C. Avoid freeze / thaw cycles.

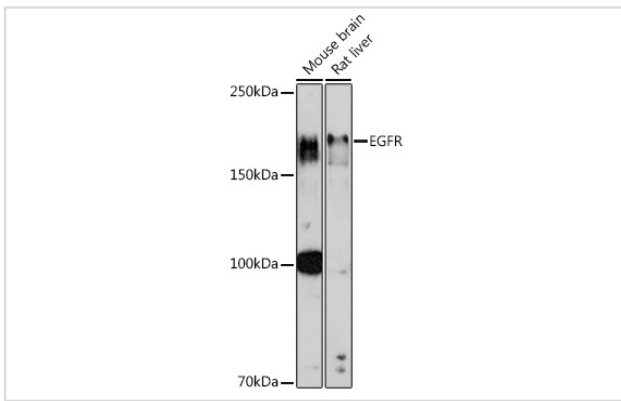
## Application Details

WB □ 1:500 - 1:2000 IHC □ 1:50 - 1:200

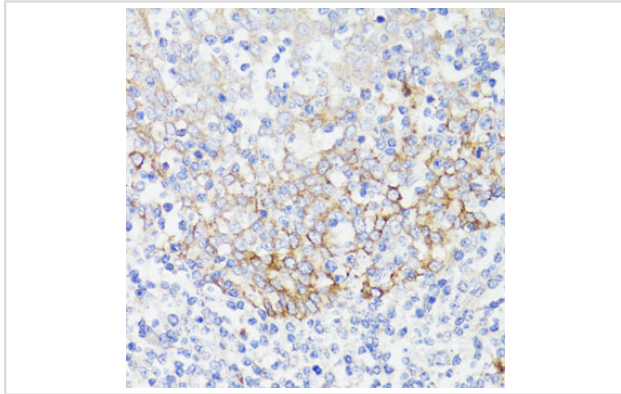
## Images



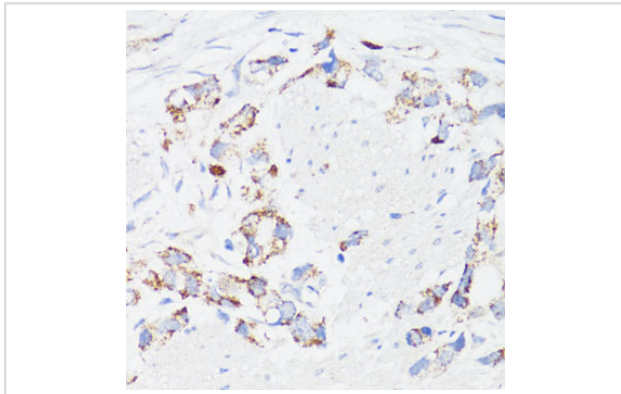
Western blot analysis of extracts of A-549 cells, using EGFR antibody.



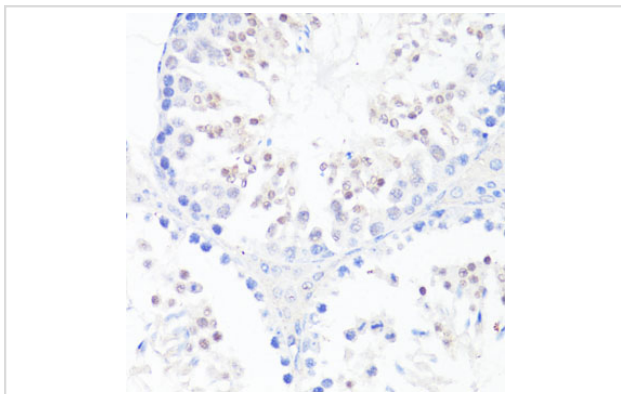
Western blot analysis of extracts of various cell lines, using EGFR antibody.



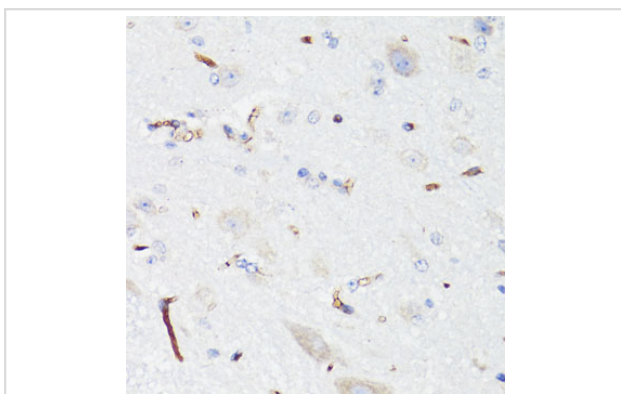
Immunohistochemistry of paraffin-embedded human tonsil using EGFR antibody.



Immunohistochemistry of paraffin-embedded human gastric cancer using EGFR antibody.



Immunohistochemistry of paraffin-embedded mouse testis using EGFR antibody.



Immunohistochemistry of paraffin-embedded mouse spinal cord endothelial cells using EGFR antibody.

## Background

---

The protein encoded by this gene is a transmembrane glycoprotein that is a member of the protein kinase superfamily. This protein is a receptor for members of the epidermal growth factor family. EGFR is a cell surface protein that binds to epidermal growth factor. Binding of the protein to a ligand induces receptor dimerization and tyrosine autophosphorylation and leads to cell proliferation. Mutations in this gene are associated with lung cancer.

---

Note: This product is for in vitro research use only and is not intended for use in humans or animals.