

## Lyn Rabbit Polyclonal Antibody

Catalog No: #53239

Package Size: #53239-1 50ul #53239-2 100ul

Orders: [order@signalwayantibody.com](mailto:order@signalwayantibody.com)Support: [tech@signalwayantibody.com](mailto:tech@signalwayantibody.com)

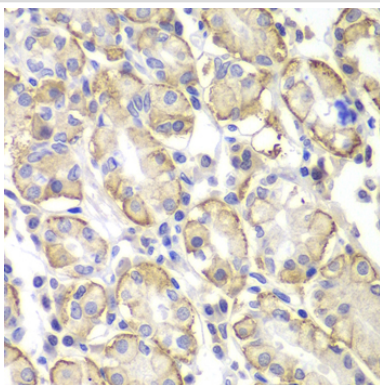
## Description

Product Name	Lyn Rabbit Polyclonal Antibody
Host Species	Rabbit
Clonality	Polyclonal
Isotype	IgG
Purification	Affinity purification
Applications	WB,IHC
Species Reactivity	Human,Mouse
Immunogen Description	A synthetic peptide of human Lyn
Other Names	LYN;JTK8;p53Lyn;p56Lyn
Accession No.	Swiss Prot:P07948GeneID:4067
Calculated MW	56kDa/58kDa
SDS-PAGE MW	56kDa
Formulation	Buffer: PBS with 0.02% sodium azide,50% glycerol,pH7.3.
Storage	Store at -20°C. Avoid freeze / thaw cycles.

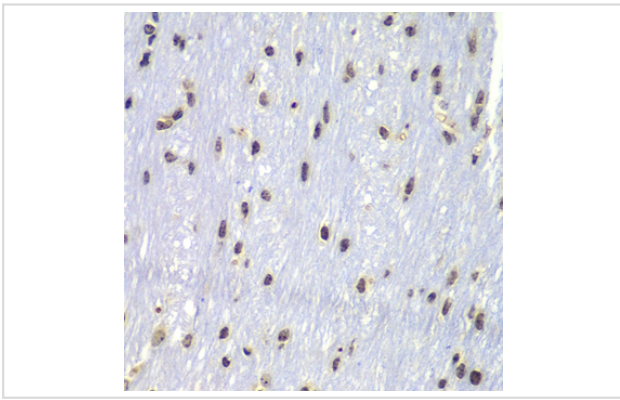
## Application Details

WB □ 1:500 - 1:2000 IHC □ 1:50 - 1:100

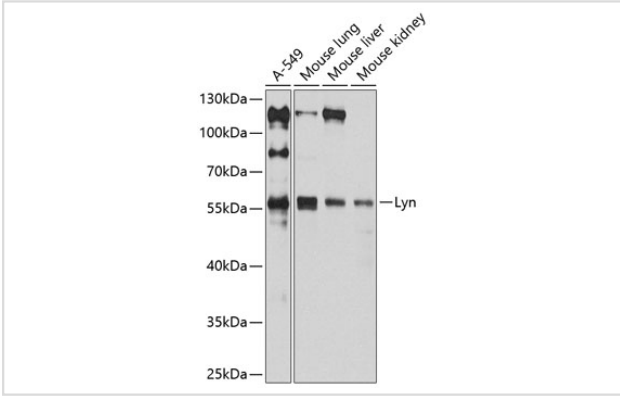
## Images



Immunohistochemistry of paraffin-embedded human stomach using Lyn at dilution of 1:100 (40x lens).



Immunohistochemistry of paraffin-embedded mouse brain using Lyn at dilution of 1:100 (40x lens).



Western blot analysis of extracts of various cell lines, using Lyn at 1:1000 dilution.

## Background

This gene encodes a tyrosine protein kinase, which maybe involved in the regulation of mast cell degranulation, and erythroid differentiation. Alternatively spliced transcript variants encoding different isoforms have been found for this gene.

Note: This product is for in vitro research use only and is not intended for use in humans or animals.