

MMP9 Rabbit Polyclonal Antibody

Catalog No: #53241

Package Size: #53241-1 50ul #53241-2 100ul

Orders: order@signalwayantibody.comSupport: tech@signalwayantibody.com

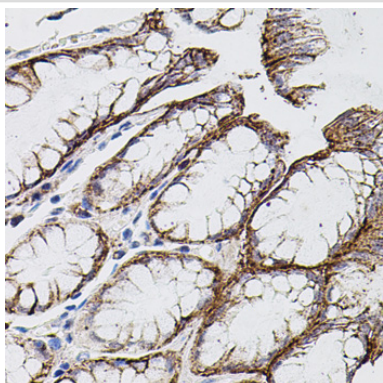
Description

Product Name	MMP9 Rabbit Polyclonal Antibody
Host Species	Rabbit
Clonality	Polyclonal
Isotype	IgG
Purification	Affinity purification
Applications	IHC
Species Reactivity	Human,Mouse
Immunogen Description	A synthetic peptide of human MMP9 (NP_004985.2).
Other Names	MMP9;CLG4B;GELB;MANDP2;MMP-9
Accession No.	Uniprot:P14780GeneID:4318
Calculated MW	78kDa
SDS-PAGE MW	/
Formulation	PBS with 0.02% sodium azide,50% glycerol,pH7.3.
Storage	Store at -20°C. Avoid freeze / thaw cycles.

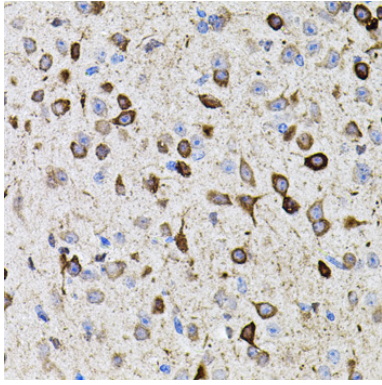
Application Details

IHC □ 1:100 - 1:200

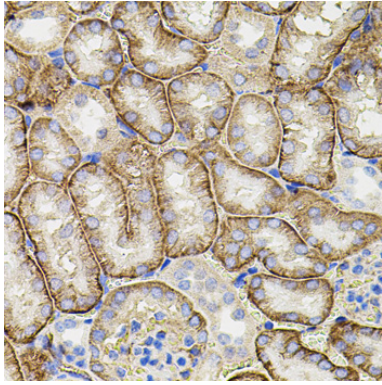
Images



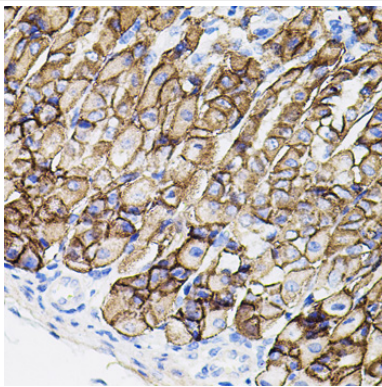
Immunohistochemistry of paraffin-embedded human stomach using MMP9 antibody.



Immunohistochemistry of paraffin-embedded mouse brain using MMP9 antibody.



Immunohistochemistry of paraffin-embedded mouse kidney using MMP9 antibody.



Immunohistochemistry of paraffin-embedded mouse stomach using MMP9 antibody.

Background

Proteins of the matrix metalloproteinase (MMP) family are involved in the breakdown of extracellular matrix in normal physiological processes, such as embryonic development, reproduction, and tissue remodeling, as well as in disease processes, such as arthritis and metastasis. Most MMP's are secreted as inactive proproteins which are activated when cleaved by extracellular proteinases. The enzyme encoded by this gene degrades type IV and V collagens. Studies in rhesus monkeys suggest that the enzyme is involved in IL-8-induced mobilization of hematopoietic progenitor cells from bone marrow, and murine studies suggest a role in tumor-associated tissue remodeling.

Note: This product is for in vitro research use only and is not intended for use in humans or animals.