

ENO2 Rabbit Polyclonal Antibody

Catalog No: #53326



Package Size: #53326-1 50ul #53326-2 100ul

Orders: order@signalwayantibody.comSupport: tech@signalwayantibody.com

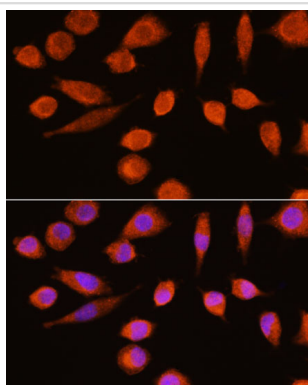
Description

Product Name	ENO2 Rabbit Polyclonal Antibody
Host Species	Rabbit
Clonality	Polyclonal
Isotype	IgG
Purification	Affinity purification
Applications	WB,IF
Species Reactivity	Human,Mouse,Rat
Immunogen Description	Recombinant fusion protein of human ENO2 (NP_001966.1).
Other Names	ENO2;HEL-S-279;NSE;enolase 2
Accession No.	Swiss Prot:P09104GeneID:2026
Calculated MW	42kDa/47kDa
SDS-PAGE MW	47kDa
Formulation	Buffer: PBS with 0.02% sodium azide,50% glycerol,pH7.3.
Storage	Store at -20°C. Avoid freeze / thaw cycles.

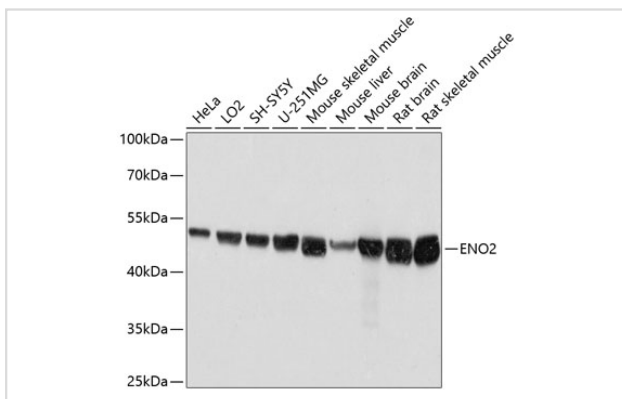
Application Details

WB □ 1:500 - 1:2000 IF □ 1:50 - 1:200

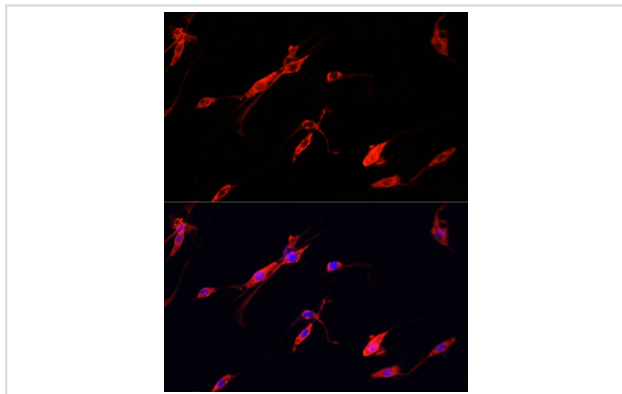
Images



Immunofluorescence analysis of L929 cells using ENO2 at dilution of 1:100. Blue: DAPI for nuclear staining.



Western blot analysis of extracts of various cell lines, using ENO2 at 1:3000 dilution.



Immunofluorescence analysis of PC-12 cells using ENO2 at dilution of 1:100. Blue: DAPI for nuclear staining.

Background

This gene encodes one of the three enolase isoenzymes found in mammals. This isoenzyme, a homodimer, is found in mature neurons and cells of neuronal origin. A switch from alpha enolase to gamma enolase occurs in neural tissue during development in rats and primates.

Note: This product is for in vitro research use only and is not intended for use in humans or animals.