

MT-ND5 Rabbit Polyclonal Antibody

Catalog No: #53360

Package Size: #53360-1 50ul #53360-2 100ul

Orders: order@signalwayantibody.comSupport: tech@signalwayantibody.com

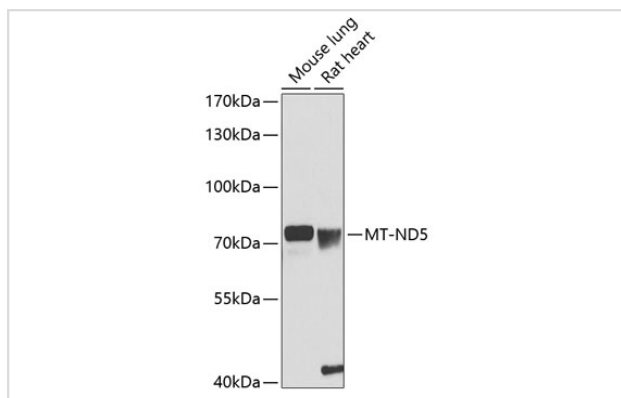
Description

Product Name	MT-ND5 Rabbit Polyclonal Antibody
Host Species	Rabbit
Clonality	Polyclonal
Isotype	IgG
Purification	Affinity purification
Applications	WB
Species Reactivity	Human,Mouse,Rat
Immunogen Description	A synthetic peptide of mouse MT-ND5 (NP_904338.1).
Other Names	MT-ND5;MTND5;ND5
Accession No.	Uniprot:P03915GeneID:17721
Calculated MW	68kDa
SDS-PAGE MW	67kDa
Formulation	PBS with 0.02% sodium azide,50% glycerol,pH7.3.
Storage	Store at -20°C. Avoid freeze / thaw cycles.

Application Details

WB □ 1:500 - 1:2000

Images



Western blot analysis of extracts of various cell lines, using MT-ND5 antibody.

Background

Core subunit of the mitochondrial membrane respiratory chain NADH dehydrogenase (Complex I which catalyzes electron transfer from NADH through the respiratory chain, using ubiquinone as an electron acceptor. Essential for the catalytic activity and assembly of complex I.

Note: This product is for in vitro research use only and is not intended for use in humans or animals.