

TIA1 Rabbit Polyclonal Antibody

Catalog No: #53371



Package Size: #53371-1 50ul #53371-2 100ul

Orders: order@signalwayantibody.com

Support: tech@signalwayantibody.com

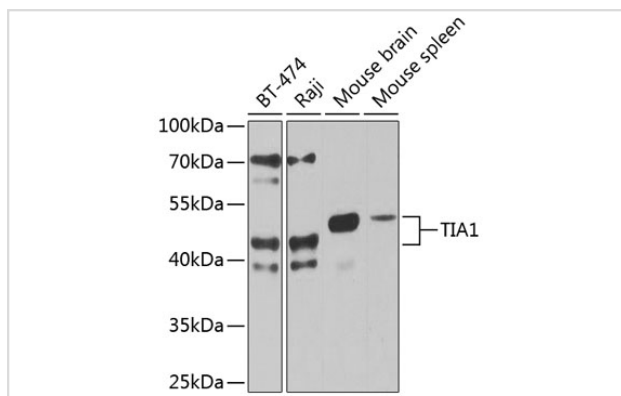
Description

Product Name	TIA1 Rabbit Polyclonal Antibody
Host Species	Rabbit
Clonality	Polyclonal
Isotype	IgG
Purification	Affinity purification
Applications	WB,IF
Species Reactivity	Human,Mouse
Immunogen Description	A synthetic peptide of human TIA1 (NP_071505.2).
Other Names	TIA1;TIA-1;WDM
Accession No.	Uniprot:P31483GenelD:7072
Calculated MW	24kDa/41kDa/42kDa
SDS-PAGE MW	43-50kDa
Formulation	PBS with 0.02% sodium azide,50% glycerol,pH7.3.
Storage	Store at -20°C. Avoid freeze / thaw cycles.

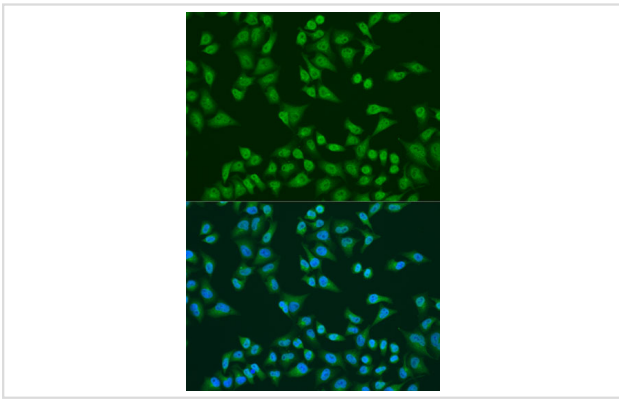
Application Details

WB 1:500 - 1:2000 IF 1:50 - 1:200

Images



Western blot analysis of extracts of various cell lines, using TIA1 antibody.



Immunofluorescence analysis of U2OS cells using TIA1 antibody.

Background

The product encoded by this gene is a member of a RNA-binding protein family and possesses nucleolytic activity against cytotoxic lymphocyte (CTL) target cells. It has been suggested that this protein may be involved in the induction of apoptosis as it preferentially recognizes poly(A) homopolymers and induces DNA fragmentation in CTL targets. The major granule-associated species is a 15-kDa protein that is thought to be derived from the carboxyl terminus of the 40-kDa product by proteolytic processing. Alternative splicing resulting in different isoforms of this gene product has been described in the literature.

Note: This product is for in vitro research use only and is not intended for use in humans or animals.