

DNAL1 Rabbit Polyclonal Antibody

Catalog No: #53398

Package Size: #53398-1 50ul #53398-2 100ul

Orders: order@signalwayantibody.comSupport: tech@signalwayantibody.com

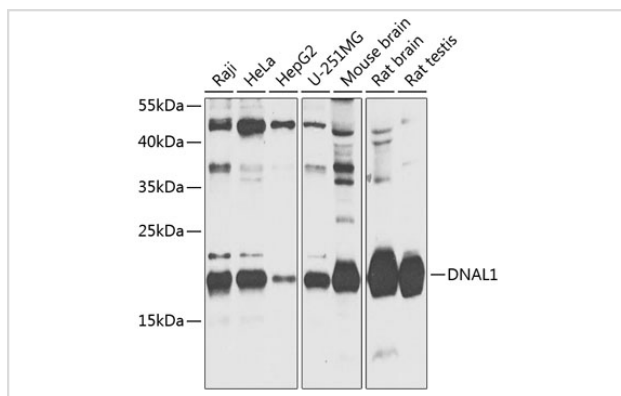
Description

Product Name	DNAL1 Rabbit Polyclonal Antibody
Host Species	Rabbit
Clonality	Polyclonal
Isotype	IgG
Purification	Affinity purification
Applications	WB,IHC
Species Reactivity	Human,Mouse,Rat
Immunogen Description	Recombinant fusion protein of human DNAL1 (NP_113615.2).
Other Names	DNAL1;C14orf168;CIL16
Accession No.	Swiss Prot:Q4LDG9GeneID:83544
Calculated MW	8kDa/17kDa/21kDa
SDS-PAGE MW	22kDa
Formulation	Buffer: PBS with 0.02% sodium azide,50% glycerol,pH7.3.
Storage	Store at -20°C. Avoid freeze / thaw cycles.

Application Details

WB □ 1:500 - 1:2000 IHC □ 1:50 - 1:200

Images



Western blot analysis of extracts of various cell lines, using DNAL1 at 1:1000 dilution.

Background

This gene encodes an axonemal dynein light chain which functions as a component of the outer dynein arms complex. This complex acts as the molecular motor that provides the force to move cilia in an ATP-dependent manner. The encoded protein is expressed in tissues with motile cilia or flagella and may be involved in the movement of sperm flagella. Alternate splicing results in multiple transcript variants.

Note: This product is for in vitro research use only and is not intended for use in humans or animals.