

NUCB2 Rabbit Polyclonal Antibody

Catalog No: #53407

Package Size: #53407-1 50ul #53407-2 100ul

Orders: order@signalwayantibody.comSupport: tech@signalwayantibody.com

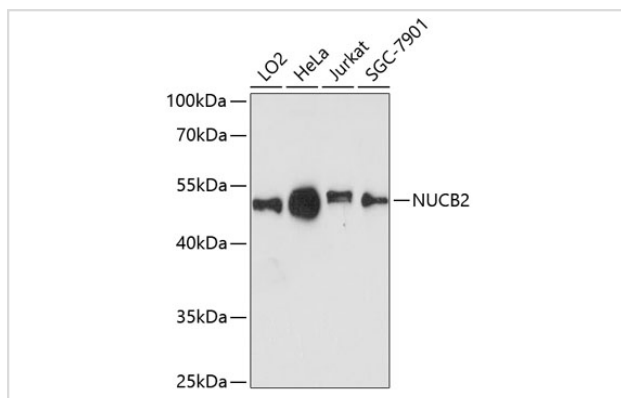
Description

Product Name	NUCB2 Rabbit Polyclonal Antibody
Host Species	Rabbit
Clonality	Polyclonal
Isotype	IgG
Purification	Affinity purification
Applications	WB,IHC
Species Reactivity	Human,Rat
Immunogen Description	Recombinant fusion protein of human NUCB2 (NP_005004.1).
Other Names	NUCB2;HEL-S-109;NEFA
Accession No.	Swiss Prot:P80303GeneID:4925
Calculated MW	50kDa
SDS-PAGE MW	50kDa
Formulation	Buffer: PBS with 0.02% sodium azide,50% glycerol,pH7.3.
Storage	Store at -20°C. Avoid freeze / thaw cycles.

Application Details

WB □ 1:500 - 1:2000 IHC □ 1:100 - 1:200

Images



Western blot analysis of extracts of various cell lines, using NUCB2 at 1:3000 dilution.

Background

This gene encodes a protein with a suggested role in calcium level maintenance, eating regulation in the hypothalamus, and release of tumor necrosis factor from vascular endothelial cells. This protein binds calcium and has EF-folding domains.

Note: This product is for in vitro research use only and is not intended for use in humans or animals.