

DKC1 Rabbit Polyclonal Antibody

Catalog No: #53462



Package Size: #53462-1 50ul #53462-2 100ul

Orders: order@signalwayantibody.comSupport: tech@signalwayantibody.com

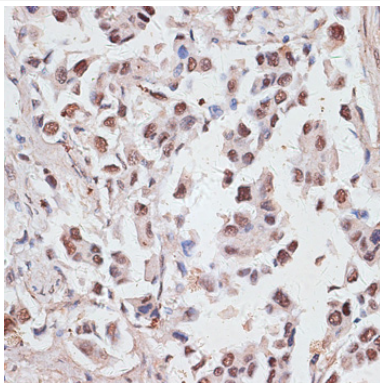
Description

Product Name	DKC1 Rabbit Polyclonal Antibody
Host Species	Rabbit
Clonality	Polyclonal
Isotype	IgG
Purification	Affinity purification
Applications	WB,IHC,IF
Species Reactivity	Human,Mouse
Immunogen Description	Recombinant fusion protein of human DKC1 (NP_001354.1).
Other Names	DKC1;CBF5;DKC;DKCX;NAP57;NOLA4;XAP101
Accession No.	Swiss Prot:O60832GeneID:1736
Calculated MW	47kDa/57kDa
SDS-PAGE MW	57kDa
Formulation	Buffer: PBS with 0.02% sodium azide,50% glycerol,pH7.3.
Storage	Store at -20°C. Avoid freeze / thaw cycles.

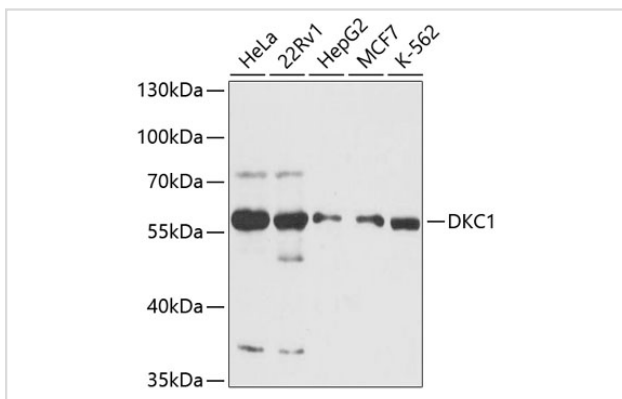
Application Details

WB □ 1:500 - 1:2000 IHC □ 1:50 - 1:100 IF □ 1:50 - 1:100

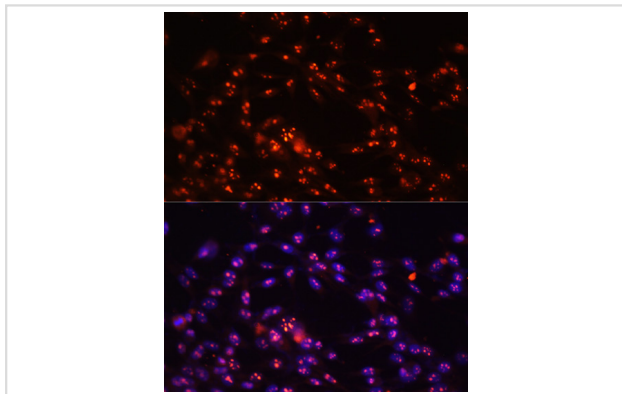
Images



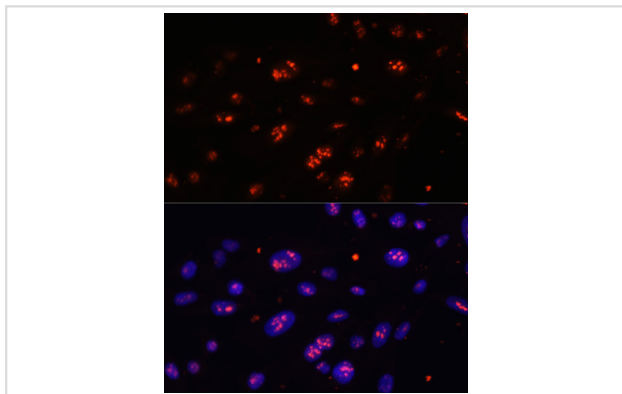
Immunohistochemistry of paraffin-embedded human lung cancer using DKC1 at dilution of 1:100 (40x lens).



Western blot analysis of extracts of various cell lines, using DKC1 at 1:3000 dilution.



Immunofluorescence analysis of NIH-3T3 cells using DKC1 at dilution of 1:100. Blue: DAPI for nuclear staining.



Immunofluorescence analysis of U-2 OS cells using DKC1 at dilution of 1:100. Blue: DAPI for nuclear staining.

Background

This gene functions in two distinct complexes. It plays an active role in telomerase stabilization and maintenance, as well as recognition of snoRNAs containing H/ACA sequences which provides stability during biogenesis and assembly into H/ACA small nucleolar RNA ribonucleoproteins (snoRNPs). This gene is highly conserved and widely expressed, and may play additional roles in nucleo-cytoplasmic shuttling, DNA damage response, and cell adhesion. Mutations have been associated with X-linked dyskeratosis congenita. Alternative splicing results in multiple transcript variants.

Note: This product is for in vitro research use only and is not intended for use in humans or animals.